



THE POWER OF **CONNECTED**

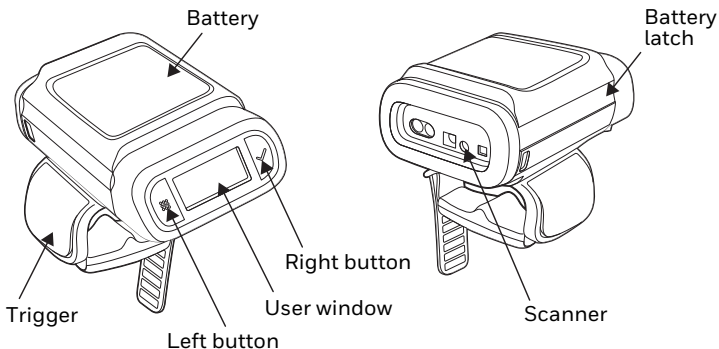
# 8680i

---

Mini Wearable Mobile Computer

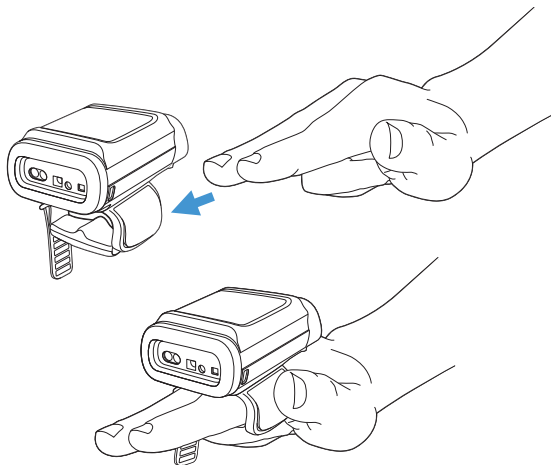
## Quick Start Guide

## Overview

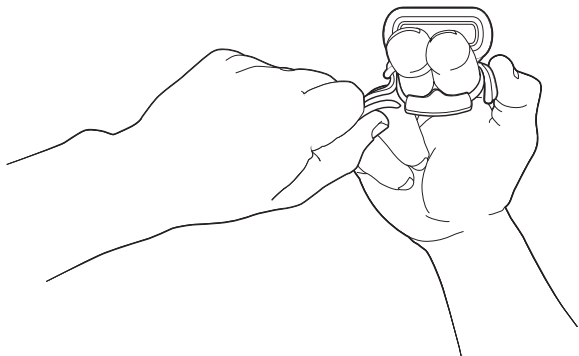
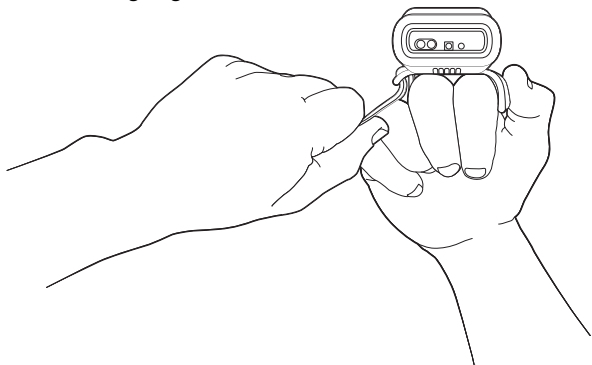


**Note:** The battery must be fully charged before the first use. An MB4-BAT-SCN02 or an MB4-SCN02 Charging Station must be purchased separately.

## Attach the Scanner to Your Hand

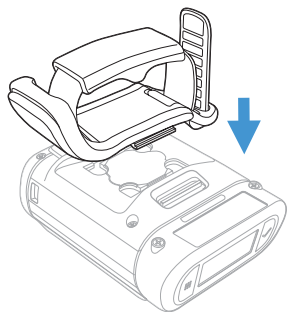
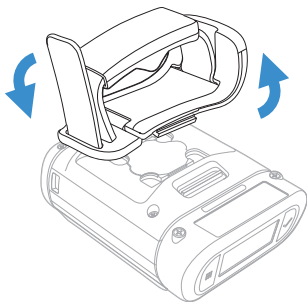
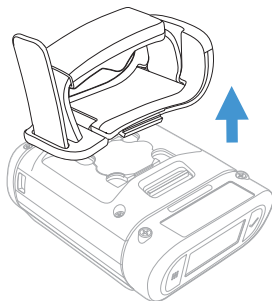
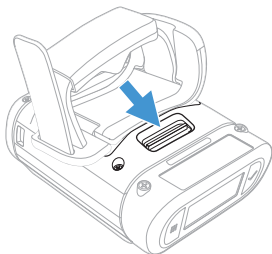


Pull the finger strap to secure it and tuck the excess strap length into the finger guide channel.



## Right or Left Handed Operation

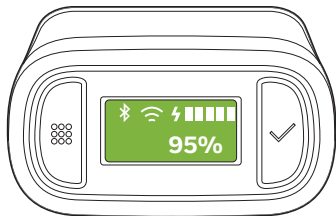
To release the finger trigger, turn over the scanner. Slide the latch toward the user window to release the finger trigger. Turn the finger strap around and snap it into place to change the operation to the correct hand.



## Power Up the Scanner

Press the trigger to power up the scanner. The battery, WiFi, and Bluetooth status appear in the window.

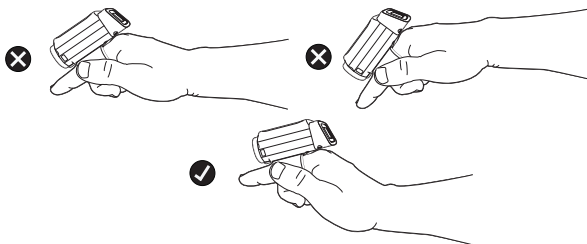
## User Window



The user window displays prompts for using the scanner in your environment. The buttons to the left and right of the window are used to scroll through the windows or to enter responses to screen prompts.

- Press both the right and left buttons at the same time to view the WiFi, Bluetooth, and battery status.
- Press and hold the left button for 6 seconds to restart the scanner.

## Wrist Position When Scanning



**Warning: Do not stare directly into the laser beam.**

## How to Scan a Bar Code

The 8680i scanner has a view finder that projects a bright aiming pattern. This aiming pattern should be centered over the bar code, but it can be positioned in any direction for a good read.

## Connect the Scanner via Bluetooth®

### Pair with a PC or Laptop Bluetooth Serial Port: Host Reconnect Mode

The 8680i can pair with host Bluetooth devices such as personal computers, laptops, and tablets. In this mode, the host will continually attempt to connect with the scanner. If the scanner and the host become disconnected, the host will manage the reconnection.

1. Scan the **Host Reconnect Mode** bar code, below.



PAPSPP;BT\_DNG1.

Host Reconnect Mode

2. Set your host device so it searches for other Bluetooth devices. (Refer to your host device's User's Guide for pairing instructions.)
3. Once your host device has located the scanner, select the 8680i scanner name from the list displayed.

**Note:** Refer to the 8680i User's Guide if your host device displays a PIN.

The Bluetooth symbol appears in the scanner window when the scanner pairs with a host.

## Pair with a PC or Laptop Bluetooth Serial Port: Scanner Reconnect Mode

In this mode, the scanner will continually attempt to connect with the host. If the scanner and the host become disconnected, the scanner will manage the reconnection.



1. Scan the **Scanner Reconnect Mode** bar code below.



BT\_TRM0,DNG5.

Scanner Reconnect Mode

2. Set your host device so it searches for other Bluetooth devices. (Refer to your host device's User's Guide for pairing instructions.)
3. Once your host device has located the scanner, select the 8680i scanner name from the list displayed.

**Note:** Refer to the 8680i User's Guide if your host device displays a PIN.

The Bluetooth symbol appears in the scanner window when the scanner pairs with a host.

## Pair with a PC or Laptop Bluetooth: HID Keyboard Mode

In this mode, the 8680i pairs with a Bluetooth device using a HID keyboard.

1. Scan the **Bluetooth HID Keyboard Connect** bar code below.



PAPBTH.

Bluetooth HID Keyboard Connect

2. Set your host device so it searches for other Bluetooth devices. (Refer to your host device's User's Guide for pairing instructions.)
3. Once your host device has located the scanner, select the 8680i scanner name from the list displayed.

**Note:** Refer to the 8680i User's Guide if your host device displays a PIN.

The Bluetooth symbol appears in the scanner window when the scanner pairs with a host.

## Disconnect from the Host

Once your scanner has been connected to a host, you must disconnect it in order to communicate with a different device. Scan the **Bluetooth Disconnect** bar code to unlink the scanner from the currently linked host.



BT\_DNG4,ADR.

Bluetooth Disconnect

## Pair with an Android™ Mobile Device

### Tap and Pair

You can pair your Android™ phone with the 8680i by touching the devices together.

1. Make sure the NFC setting is **On** in your phone.
2. Touch the Android phone to the scanner.
3. The phone recognizes the scanner and prompts you to pair.
4. Verify the pairing of the 8680i in your phone's Bluetooth settings.

## Pair with an Android, Apple™ or Windows® Mobile Device

The 8680i can pair with Android, Apple, and Windows mobile devices, excluding Windows CE and Mobile.

1. Set your mobile device so it searches for other Bluetooth devices. (Refer to your mobile device's User's Guide for pairing instructions.)
2. Scan the **Bluetooth HID Keyboard Connect** bar code below.



PAPBTH.

Bluetooth HID Keyboard Connect

3. On the mobile device, the 8680i scanner is shown as a keyboard. Click on it to pair.

The Bluetooth symbol appears in the scanner window when the scanner pairs with a mobile device.

## Pair with a Honeywell Vehicle Mount Computer

The 8680i can pair with Honeywell vehicle mount computers, such as the Thor VM1 or VM2, or with Tecton mobile computers.

1. Scan the **Bluetooth HID Keyboard Disconnect** bar code below.



PAPSPP.

Bluetooth HID Keyboard Disconnect

2. Use the 8680i to scan the EZPairing bar code that is either supplied with the device, attached to the device, or displayed on the screen. The EZPairing bar code begins with {FNC3}LnkB, followed by 10 digits, like the sample below.



LnkBxxxxxxxxxx

The Bluetooth symbol appears in the user window when the 8680i pairs with a host.

## Reset Custom Defaults

If you want the custom default settings restored to your 8680i, scan the **Activate Custom Defaults** bar code below. This is the recommended default bar code for most users. It resets the 8680i to the custom default settings. If there are no custom defaults, it resets the 8680i to the factory default settings (Bluetooth HID Keyboard Emulation). Any settings that have not been specified through the custom defaults are defaulted to the factory default settings.



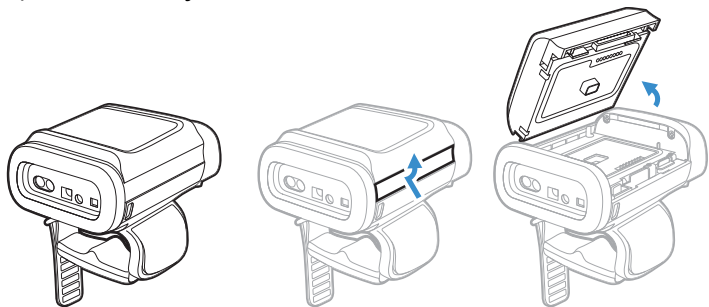
**Activate Custom Defaults**

**Note:** *Scanning the Defaults bar code also causes both the 8680i and the host to perform a reset and become unlinked. You must relink (pair) the 8680i to the host.*

## Replace the Battery

**Note:** *The battery should be replaced in an environment free from excessive dust or particulate to avoid an internal buildup of dust in the unit.*

When the battery is low, the 8680i beeps and vibrates and the window shows a **Battery Low** warning. You can also press both the right and left buttons at any time to view the battery's charge status. To replace the battery, squeeze the battery latch and lift up on the battery.



Replace the battery by snapping it in to the scanner.

## Support

To search our knowledge base for a solution or to log into the Technical Support portal and report a problem, go to [www.hsmcontactsupport.com](http://www.hsmcontactsupport.com).

## User Documentation

For the user guide and other documentation, go to [www.honeywellaidc.com](http://www.honeywellaidc.com).

## Limited Warranty

For warranty information, go to [www.honeywellaidc.com](http://www.honeywellaidc.com) and click **Get Resources > Product Warranty**.

## Patents

For patent information, see [www.hsmpats.com](http://www.hsmpats.com).

## Disclaimer

Honeywell International Inc. (“HII”) reserves the right to make changes in specifications and other information contained in this document without prior notice, and the reader should in all cases consult HII to determine whether any such changes have been made. The information in this publication does not represent a commitment on the part of HII.

HII shall not be liable for technical or editorial errors or omissions contained herein; nor for incidental or consequential damages resulting from the furnishing, performance, or use of this material. HII disclaims all responsibility for the selection and use of software and/or hardware to achieve intended results.

This document contains proprietary information that is protected by copyright. All rights are reserved. No part of this document may be photocopied, reproduced, or translated into another language without the prior written consent of HII.

Copyright © 2018 Honeywell International Inc. All rights reserved.

Microsoft® Windows®, Windows NT®, Windows 2000, Windows ME, Windows XP, and the Windows logo are trademarks or registered trademarks of Microsoft Corporation.

The Bluetooth® word mark and logos are owned by Bluetooth SIG, Inc.

Android™ is a trademark of Google Inc.

Apple is a trademark of Apple Inc., registered in the U.S. and other countries.