



ScanPal™ EDA71 Series

Enterprise Tablet powered by Android™

Quick Start Guide

Out of the Box

Make sure that your shipping box contains these items:

- ScanPal Enterprise Tablet
(Model EDA71-0 or EDA71-1)
- Rechargeable 3.8 V Li-ion battery
- Product documentation

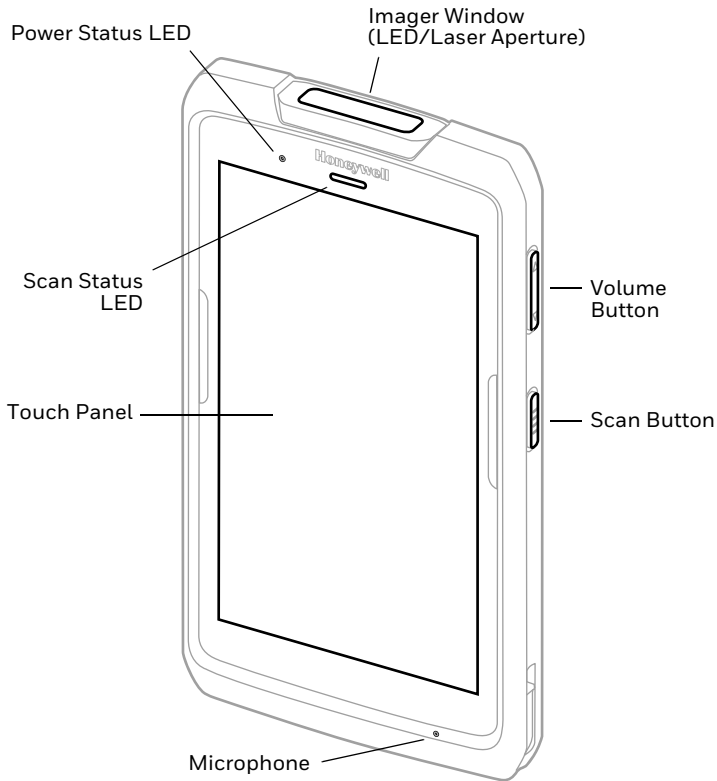
If you ordered accessories for your mobile computer, verify that they are also included with the order. Be sure to keep the original packaging in case you need to return the mobile computer for service.

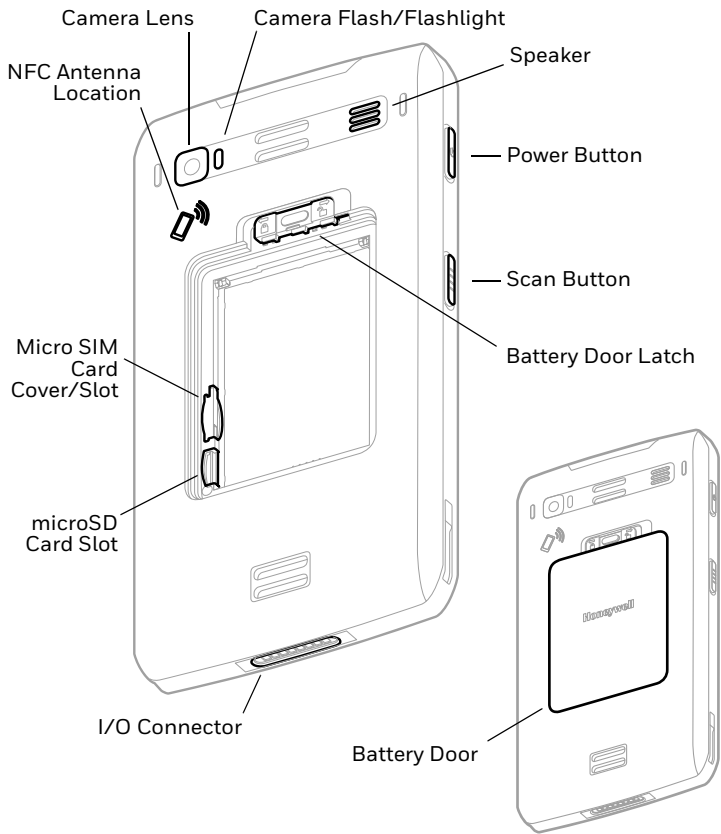
Note: *EDA71-0 models do not include a WWAN radio.*

Memory Card Specifications

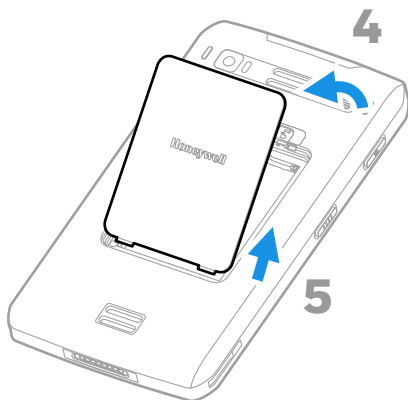
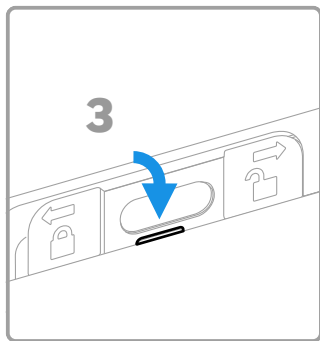
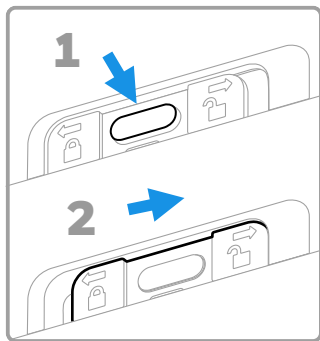
Honeywell recommends the use of Single Level Cell (SLC) industrial grade microSD™ or microSDHC™ memory cards with ScanPal tablets for maximum performance and durability. Contact a Honeywell sales representative for additional information on qualified memory card options.

Tablet Features





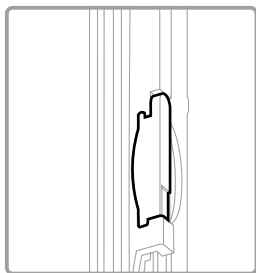
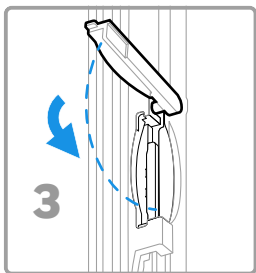
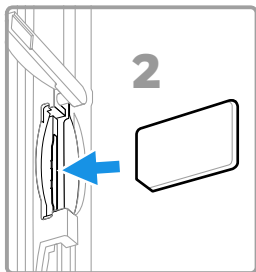
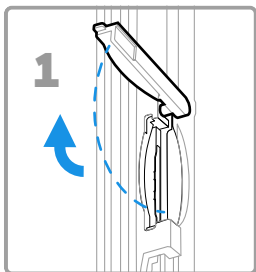
Remove the Battery Door



Install a Micro SIM Card

Only EDA71-1 (WWAN) models support micro SIM card use for cellular phone features.

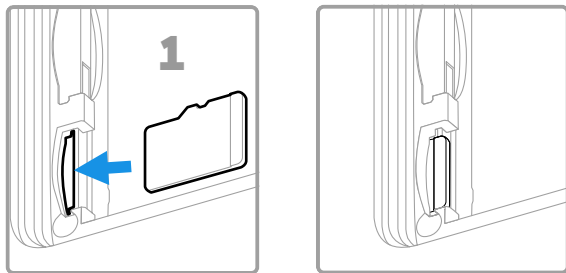
On EDA71-0 (WLAN) models, the micro SIM slot feature is limited to UICC card use for NFC Secure Element NFC link encryption only.



Note: Always power off the computer before attempting to install or remove a card.

Install a microSD Card (Optional)

Note: *Format the microSD card before initial use.*



Note: *Always power off the computer before attempting to install or remove a card.*

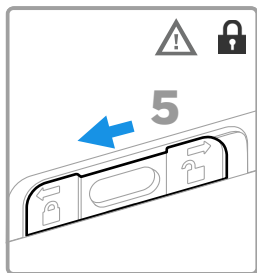
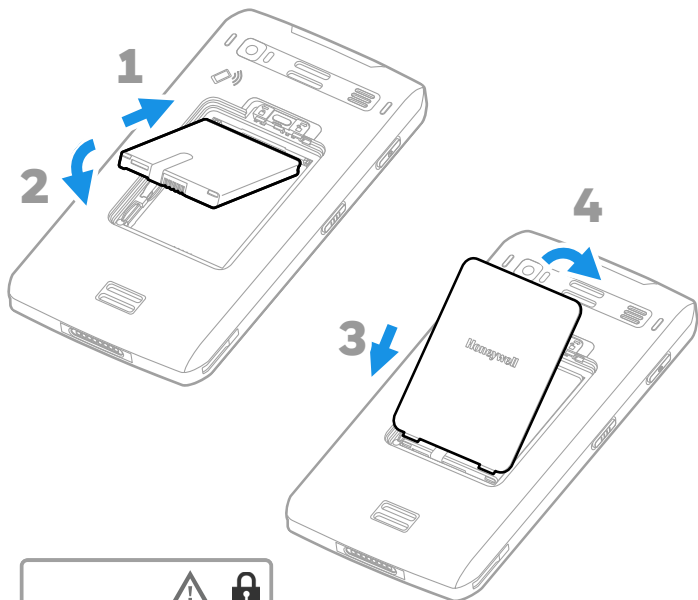
Install the Battery

The EDA71 ships with a Li-ion 3.8 V battery manufactured for Honeywell International Inc.



We recommend use of Honeywell Li-ion battery packs. Use of any non-Honeywell battery may result in damage not covered by the warranty.

Ensure all components are dry prior to placing the battery in the computer. Mating wet components may cause damage not covered by the warranty.



Charge the EDA71

The EDA71 mobile computer ships with a partially charged battery. Charge the battery with an EDA70 or EDA71 charging device for a minimum of **4 hours**. Using the computer while charging the battery increases the time required to reach a full charge.



We recommend the use of Honeywell accessories and power adapters. Use of any non-Honeywell accessories or power adapters may cause damage not covered by the warranty.

EDA71 tablets are designed for use with EDA70 and EDA71 series charging accessories. For more information about accessories, see the ScanPal EDA70/EDA71 Series Enterprise Tablet Accessories Guide at www.honeywellaidc.com.



Ensure all components are dry prior to mating the computers and batteries with peripheral devices. Mating wet components may cause damage not covered by the warranty.

Turn Power On/Off

The first time you power on the computer, a Welcome screen appears. You can either scan a configuration barcode or use the Wizard to manually set up the computer. Once setup is complete, the Welcome screen no longer appears on startup and Provisioning mode (see page 13) is automatically turned off (disabled).

To turn the computer on:

- Press and hold the **Power** button for approximately 3 seconds, and then release.

To turn the computer off:

1. Press and hold the **Power** button until the options menu appears.
2. Touch **Power off**.

Note: *You should always power off the computer before removing the battery.*


Sleep Mode

Sleep mode automatically turns the touch panel display off and locks the computer to save battery power when the computer is inactive for a programmed period of time.

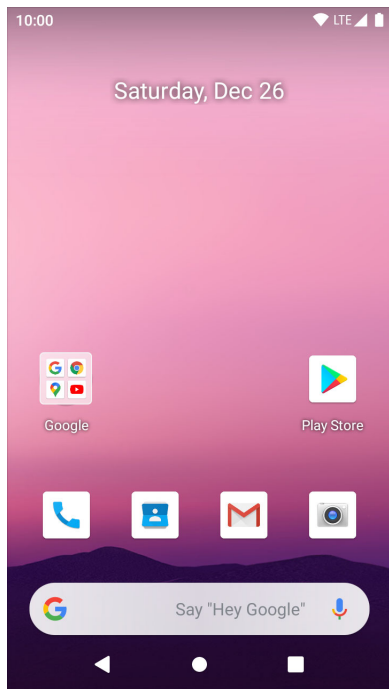
1. Press and release the **Power** button to wake the computer.
2. Swipe up from the bottom of the lock screen.

Adjust the Display Sleep Time

To adjust the amount of time before the display sleeps after inactivity:

1. Swipe up on the Home screen.
2. Select **Settings > Display > Advanced > Screen timeout**.
3. Select the amount of time before the display goes to sleep.
4. Touch  to return to the Home screen.


About the Home Screen



Notification /
Status Bar

Home Screen Panel

Favorites Tray
Search Bar







Touch  to initiate a
voice search or
command.

Navigation Buttons

To learn how to customize the Home screen, see the user guide.

Navigation and Function Buttons

For button locations, see [Tablet Features](#).

Button	Description	
	Back	Return to the previous screen.
	Home	Return to the Home screen.
	Recent Apps	View, close, and switch between recently used apps.
	Volume	Press the top of the button to raise the speaker volume. Press the bottom of button to lower the speaker volume.
	Scan	Press left or right Scan button to trigger the scanner.
	Power	See Turn Power On/Off on page 9.

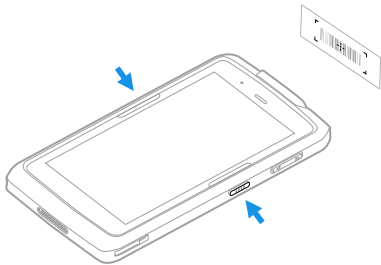
About Provisioning Mode

After completing the out-of-box set up process, Provisioning mode is automatically turned off. Scanning a barcode to install applications, certificates, configuration files, and licenses on the computer is restricted unless you enable Provisioning mode in the Settings app. To learn more, see the user guide.

Scan a Barcode with the Scan Demo

For optimum performance, avoid reflections by scanning the barcode at a slight angle.

1. Swipe up on the screen to access all apps.
2. Select **Demos** > **Scan Demo**.
3. Point the computer at the barcode.
4. Touch **Scan** on the screen or press and hold any Scan button. Center the aiming beam over the barcode.



The decode results appear on the screen.

Note: *In the Scan Demo app, not all barcode symbologies are enabled by default. If a barcode does not scan, the correct symbology may not be enabled. To learn how to modify the default app settings, see the user guide.*

Sync Data

To move files between your EDA71 and your computer:

1. Connect the EDA71 to your computer using a USB charge/communication dock or snap on.
2. On the EDA71, swipe down from the top of the screen to see the notifications panel.
3. Select the Android System notification twice to open the options menu.
4. Select either **File Transfer** or **PTP (Transfer Photos)**.
5. Open the file browser on your computer.
6. Browse to the EDA71. You can now copy, delete, and move files or folders between your computer and EDA71 as you would with any other storage drive (e.g., cut and paste or drag and drop).

Note: *When Provisioning mode is turned off, some folders are hidden from view in the file browser.*

Restart the Mobile Computer

You may need to restart the mobile computer to correct conditions where an application stops responding to the system or the computer seems to be locked up.

1. Press and hold the **Power** button until the options menu appears.
2. Select **Restart**.

To restart the computer if the touch panel display is unresponsive:

- Press and hold the **Power** button for approximately 8 seconds until the computer restarts.

Note: *To learn about advanced reset options, see the user guide.*

Support

To search our knowledge base for a solution or to log into the Technical Support portal and report a problem, go to www.honeywellaidc.com/working-with-us/contact-technical-support.

Documentation

Product documentation is available at www.honeywellaidc.com.

Limited Warranty

For warranty information, go to www.honeywellaidc.com and click **Resources > Product Warranty**.

Patents

For patent information, see www.hsmpats.com.

Disclaimer

Honeywell International Inc. (“HII”) reserves the right to make changes in specifications and other information contained in this document without prior notice, and the reader should in all cases consult HII to determine whether any such changes have been made. The information in this publication does not represent a commitment on the part of HII.

HII shall not be liable for technical or editorial errors or omissions contained herein; nor for incidental or consequential damages resulting from the furnishing, performance, or use of this material. HII disclaims all responsibility for the selection and use of software and/or hardware to achieve intended results.

This document contains proprietary information that is protected by copyright. All rights are reserved. No part of this document may be photocopied, reproduced, or translated into another language without the prior written consent of HII.

Copyright © 2019-2021 Honeywell International Inc. All rights reserved.