



Desktop Printers

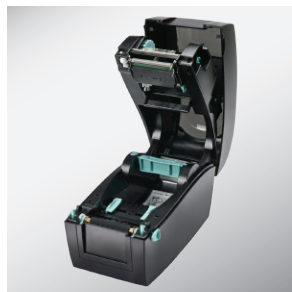
# RT200i / RT230i

## Mini Barcode Printer with Industrial Performance

The RT200i barcode printer is packed with performance enhancing features that makes it the most powerful 2" thermal transfer printer



Color TFT LCD and operation panel for easy and intuitive operation



Modern clam-shell design makes it simple to load labels



Ethernet, USB 2.0, Serial and USB host are standard features adding flexibility and power



Innovative "C" button makes label Calibration simple and fast



# RT200i/RT230i Series Printer Specifications

Model	RT200i	RT230i
Print Method	Thermal Transfer / Direct Thermal	
Resolution	203 dpi (8 dots/mm)	300 dpi (12 dots/mm)
Print Speed	7 IPS (177 mm/s)	5 IPS (127 mm/s)
Print Width	2.12" (54 mm)	2.24" (56.9 mm)
Print Length	Min. 0.16" (4 mm)** ; Max. 68" (1727 mm)	Min. 0.16" (4 mm)** ; Max. 30" (762 mm)
Processor	32 Bit RISC CPU	
Memory	8MB Flash (4MB for user storage) ; 16MB SDRAM	
Sensor Type	Adjustable reflective sensor (full range). Fixed transmissive sensor, central aligned	
Media	Types : Continuous form, gap labels, black mark sensing, and punched hole; label length set by auto sensing or programming Width : 0.6" (15 mm) Min. – 2.36" (60 mm) Max. Thickness : 0.003" (0.076 mm) Min. - 0.008" (0.2 mm) Max. Label roll diameter : Max. 5" (127 mm) Core diameter : 1", 1.5" (25.4 mm, 38.1 mm)	
Ribbon	Types: Wax, wax/resin, resin Length: 360' (110 m) Width: 2.20" (56mm) – 2.32" (59mm) Ribbon roll diameter: 1.5" (38 mm) Max. Core diameter: 0.5" (12.7 mm)	
Printer Language	EZPL, GEPL, GZPL, GDPL auto switch	
Software	Label design software: GoLabel II (for EZPL only) (Windows) Driver: Windows 7, Windows 8 & 8.1, Windows 10, Windows 11, Windows Server 2008 R2, 2012, 2012 R2, 2016, 2019, 2022, MAC, Linux SDK: Win CE, .NET, Windows 7, Windows 8 & 8.1, Windows 10, Windows 11, Android, Mac, iOS	
Resident Fonts	Bitmap fonts: 6, 8, 10, 12, 14, 18, 24, 30, 16X26 and OCR A & B Bitmap fonts 0°, 90°, 180°, 270° rotatable, single characters 0°, 90°, 180°, 270° rotatable Bitmap fonts 8 times expandable in horizontal and vertical directions TTF Fonts: TTF Fonts (Bold / Italic / Underline ), 0°, 90°, 180°, 270° rotatable	
Download Fonts	Bitmap fonts: 0°, 90°, 180°, 270° rotatable, single characters 0°, 90°, 180°, 270° rotatable Asian fonts: 16x16, 24x24. Traditional Chinese (BIG-5), Simplified Chinese (GB2312), Japanese (S-JIS), Korean (KS-X1001) 0°, 90°, 180°, 270° rotatable and 8 times expandable in horizontal and vertical directions TTF fonts: TTF Fonts (Bold / Italic / Underline ), 0°, 90°, 180°, 270° rotatable	
Barcodes	1-D Bar codes: China Postal Code, Codabar, Code 11, Code 32, Code 39, Code 93, Code 128 (subset A, B, C), EAN-8/EAN-13 (with 2 & 5 digit extension), EAN 128, FIM, German Post Code, GS1 DataBar, HIBC, Industrial 2 of 5, Interleaved 2-of-5 (1 2 of 5), Interleaved 2-of-5 with Shipping Bearer Bars, ISBT-128, ITF 14, Japanese Postnet, Logmars, MSI, Postnet, Plessey, Planet 11 & 13 digit, RPS 128, Standard 2 of 5, Telepen, Matrix 2 of 5, UPC-A/UPC-E (with 2 or 5 digit extension), UCC/EAN-128 K-Mart and Random Weight 2-D Bar codes: Aztec code, Code 49, Codablock F, Datamatrix code, MaxiCode, Micro PDF417, Micro QR code, PDF417, QR code, TLC 39, GS1 Composite	
Code Pages	Codepage 437, 737, 850, 851, 852, 855, 857, 860, 861, 862, 863, 865, 866, 869 Windows 1250, 1251, 1252, 1253, 1254, 1255, 1257 Unicode UTF8 · UTF16BE · UTF16LE	
Graphics	Resident graphic file types are BMP and PCX, other graphic formats are downloadable from the software	
Interfaces	USB 2.0 Device (B-Type) Serial port: RS-232 (DB-9) IEEE 802.3 10/100 Base-Tx Ethernet port (RJ-45) USB Host (A-Type)	
RTC	Standard	
Control Panel	Color TFT LCD with navigation button Calibration button Control key: FEED Power on / off button	
Power	Auto Switching 100-240VAC, 50-60Hz.	
Environment	Operation temperature: 41°F to 104°F (5°C to 40°C) Storage temperature: -4°F to 122°F (-20°C to 50°C)	
Humidity	Operation: 30-85%, non-condensing. Storage: 10-90%, non-condensing.	
Agency Approvals	CE(EMC) · FCC Class A · CB · cUL · EAC · BIS · CCC · UKCA Length: 9.7" (245 mm)	
Dimension	Height: 6.9" (175 mm) Width: 5.3" (136 mm)	
Weight	3.64 lbs ( 1.65 Kg), excluding consumables	
Options	Cutter Label Dispenser External label roll holder for 10" (250 mm) O.D. label rolls External label rewinder	

\*Specifications are subject to change without notice. All company and/or product names are trademarks and/or registered trademarks of their respective owners.

\*\*Minimum print height and maximum print speed specification compliance can be dependent on non-standard material variables such as label type, thickness, spacing, liner construction, etc. GoDEX is pleased to test non-standard materials for minimum print height, and maximum print speed capability.

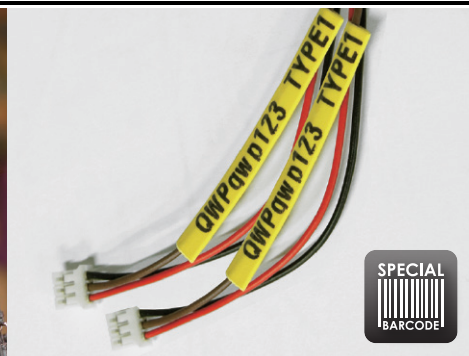
# Applications

## Applications for Labels & Barcodes

RT200i/RT230i series is your best friend for getting the job done instantly.



TICKET



### Retail

Price tags, content labels, receipts for registered mails, postage labels, etc.

### Travel & Leisure

By barcoding your tickets, you can track ticket sales and admittance, as well as improve security at your event.

### Special Materials

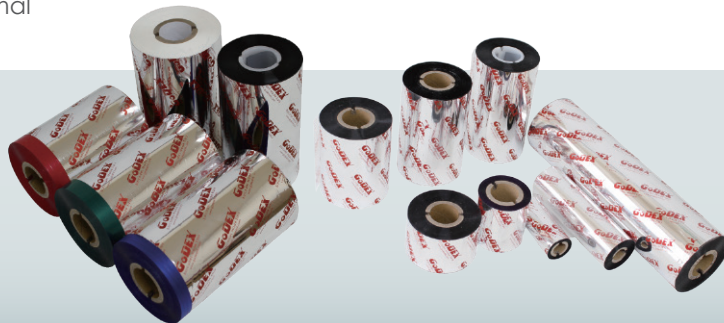
Most kinds of materials from banners, small components labeling, name plates, plastic tubes, plastic cards, cable labeling.

## GoDEX RIBBONS

High quality original GODEX thermal transfer ribbons

GODEX offers premium thermal transfer ribbons that will fit most of your printing applications.

- Wax
- Wax/ Resin
- Resin
- Near Edge



## GoDEX LABEL DESIGN SOFTWARE

GoLabel Software / User Friendly

GoLabel is based on a WYSIWYG (what you see is what you get) user interface, makes everything so easy for you to create and print barcode labels. GoLabel is the first-choice label design software that you can't miss it!

Go visit [www.godexintl.com](http://www.godexintl.com) and download GoLabel to experience it!

