

EA630 BEST IN CLASS

High performance scalable mobile computer!



Scalable PDA with insane screen to body ratio!

Powerful, rugged, multitasking, responsive and scalable device whilst being **competitively priced!**

The EA630 is impressive with its large 6" HD+ 18:9 display, 80% screen to body ratio design and snappy Qualcomm Snapdragon 636 Octa-core 64-bits 1.8 GHz processor. A large 4000mAh battery capacity frees you from the concern of battery draining during your working day. This enterprise mobile computer offers all great enterprise and smartphone features but styled into a scalable design as it comes with a great and unique range of optional accessories - making your work days easier.

Offering the latest OS of Android 9 and upgradable to Android 10, the EA630 also comes with the Google GMS license and AER certification.

It is ideal for a variety of applications in the retail, warehousing, T&L, hospitality, healthcare and field services.



High resolution with a bright screen

The 6.0" (2160 x 1080 pixel) high brightness readable (450 nits) full HD+ display (18:9) with backlight makes the EA630 extremely user friendly and readable in any environment.



Large screen to body ratio

The EA630 screen-to-body ratio is a massive 80%. This gives you a big screen in a compact design for easier multitasking (run 2 apps on one screen) and more immersive readability.



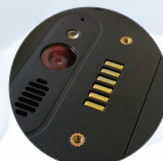
Removable quick charge battery

For businesses a long battery life is essential. The EA630 comes with an easy swappable 4000mAh battery supporting Quick Charge 3.0 technology.



Lightweight and tough

The Unitech EA630 only weighs 230g, but is fitted with a Gorilla® 6 Glass touch panel, has a drop resistance of 1.2m (1.5m with optional boot case) and an IP65 rated body to withstand the harshest environments.



Scalability

Thanks to POGO pins on rear and bottom side, the EA630 has limitless scalability options for accessories such as gun grips and desktop cradles. The EA630 comes with a rich line of professional accessories to customize your working requirements.



External Display via DisplayPort

Use the ethernet 1-slot desktop cradle to connect your EA630, via the Display Port (DP), to an external full-size monitor (can also carry audio, USB, and other forms of data).



All-in-One data collection

The EA630 has an integrated 1D/2D scanning capability, as well as an integrated HF/NFC RFID reader/writer, GPS, and a high-resolution 16MP camera in this compact device.



Extensive range of accessories

Boost the functionality of the EA630 device with Unitech's unique and versatile gun grip accessories to extend your data collection. From standard trigger gun grip to Long Range 2D or RFID gun grip accessory.

unitech



EA630

Specifications

EN Version 1.1

Operation System

CPU	Qualcomm Snapdragon 1.8GHz 636 Octa core 64-bit Processor
Memory	3GB RAM 32GB Flash
OS	Android 9 with: GMS (Google Mobile Service) certification AER (Android Enterprise Recommended)
Card Slot	1x Micro SD/TF (max. 256GB) 2 x Nano Sim
Language Support	English, Simplified Chinese, Traditional Chinese, Japanese, Spanish, German, French, Italian, Portuguese, Korean and multiple languages

Display

6" (18:9) Full-HD (2160 x 1080) colour, Ultra sensitive capacitive type
5 points multi-touch screen, compatible with gloves and support wet
resistance, Gorilla 6 glass, Backlight, 450nits.

Camera/Photos/Video

Rear: 16MP camera, Auto Focus, LED flash light

Audio

One speaker (95±3dB @ 10cm), One receiver, Dual noise-cancelling
microphones.

Buttons

Side SCAN button x 2 (Left / Right), User-defined function button,
Volume switch button (+ / -, ON / OFF buttons)

Indicator

LED, Speaker, Vibrator

Communication

USB	USB3.1 (type-C) support USB OTG Support Display Port Mode Ethernet/USB-Host via cradle Yes, over USB Type-C
OTG	PogoPin backside: Support Gungrip, UHF reader PogoPin bottom: Charging via cradle Electronic switch gun-grip
POGO PIN	Wireless LAN 802.11a/b/g/n/ac, 2.4GHz and 5GHz Support 802.11d/e/h/i/k/r/v, fast roaming Compliant with WEP, WPA and IEEE 802.11i WPA2
WLAN	Bluetooth® 5.0+ BR/EDR + BLE supported
Bluetooth	
WWAN 4G LTE	2 x Nano Sim GSM: 850,900,1800,1900 MHz WCDMA: Band 1, Band 2, Band 5, Band 8 LTE: FDD-LTE (B1/B2/B3/B4/B5/B7/B8/B 12/B17/ B19/B20/B28) TDD-LTE: (B38/B39/B40/B41)
GPS	AGPS, GPS, GLONASS, Beidou , Galileo, QZSS, SBAS
Other Sensors	Gyroscope, Light sensor, e-Compass, Proximity sensor, Accelerometer sensor, SAR sensor

Enclosure

Weight	230g (with battery)
Dimension	157.4mm×76.4mm×13.9mm

Software Support



Data capture

Scanning	Scanner (Engine: N3603) UPC/EAN/JAN, GS1 DataBar, Code 39, Code 128, Code 32, Code 93, Codabar/NW7, Inter leaved 2 of 5, Matrix 2 of 5, MSI, Trioptic.
1D:	PDF417, MicroPDF417, GS1 Composite, Code11, Aztec Code, Data Matrix, QR Code, Micro QR Code, Maxi Code, Han Xin Code, DOT Code .
2D:	Intelligent Mail Barcode, Postal-4i, Australian Post, Japanese Post, Netherlands (KIX) Post, Postnet, Planet Code.
Postal:	OCR-A, OCR-B, E13B (MICR). Support HF/NFC Frequency 13.56Mhz Support: ISO14443-4 (Type A, Type B), ISO15693 standard, Mifare, Felica (ISO/IEC18092).
OCR:	
RFID/NFC:	Optional Gun Grip accessory Honeywell EX30 Barcode Engine Support 5cm~20meters reading distance* (*Depending on width, type and quality of barcode).
2D Long Range:	Optional Gun Grip accessory 6 meters plus reading distance* (*Depends on environment, tags and object).
RFID/UHF:	

Power Source

Main battery	Swappable and rechargeable 3.8V 4000mAh Li-polymer battery pack.
Operation	10-12 hours (depending on the specific environment)
Quick charging	Support QC3.0 with separate power adapter over USB type-C port only
RTC battery	Real time clock battery

Environmental

Operating temperature	-10°C to +50°C
Storage temperature	-30°C~70°C (without battery)
Charging temperature	0°C to 45°C
Relative humidity	5% ~ 95% (non-condensing)
Drop specification	1.2m MIL-STD 810G, 1.5m with boot case
Sealing	IP65

Regulatory Approvals

CE, FCC, NCC, BSMI, VCCI, CCC, RoHS, CEC, BQB, N-Mark compliance.

Accessories

- Quick charge 3.0 EU daptor (via USB type-C cable)
- USB 3.0 type-C Quick-charging cable
- USB 2.0 type-C Standard USB cable
- 9H glass screen protector
- Protective boot (without hand-strap)
- Stylus
- Coiled strap
- Hand strap (including bracket)
- Bracket
- Belt holster (with belt clip)
- Single Slot Charging cradle
- Single Slot USB cradle
- Single Slot Ethernet cradle
- Power adapter for 1-slot cradles
- 4 Slots Ethernet cradle
- 4 Slots Terminal Charging cradle
- Power adapter for 4-slot cradles
- 3 Pins Power Cord (EU) for Power Adaptor
- 3 Pins Power Cord (UK) for Power Adaptor
- Gun grip standard (version with or without protective boot)
- Gun grip 2D Long Range (version with or without protective boot)
- Gun grip UHF RFID (version with or without protective boot)

Unitech Europe

Tilburg, The Netherlands • Tel.: +31 (0)13 460 9292 • Email: Info@eu.ute.com • Website: http://eu.ute.com

Specifications subject to change without notice. Copyright 2011 Unitech Electronics Co., Ltd. All rights reserved. Unitech is a registered trademark of Unitech Electronics Co., Ltd. All product and company names are trademarks, service marks, or registered trademarks of their respective owners.



unitech
because we care