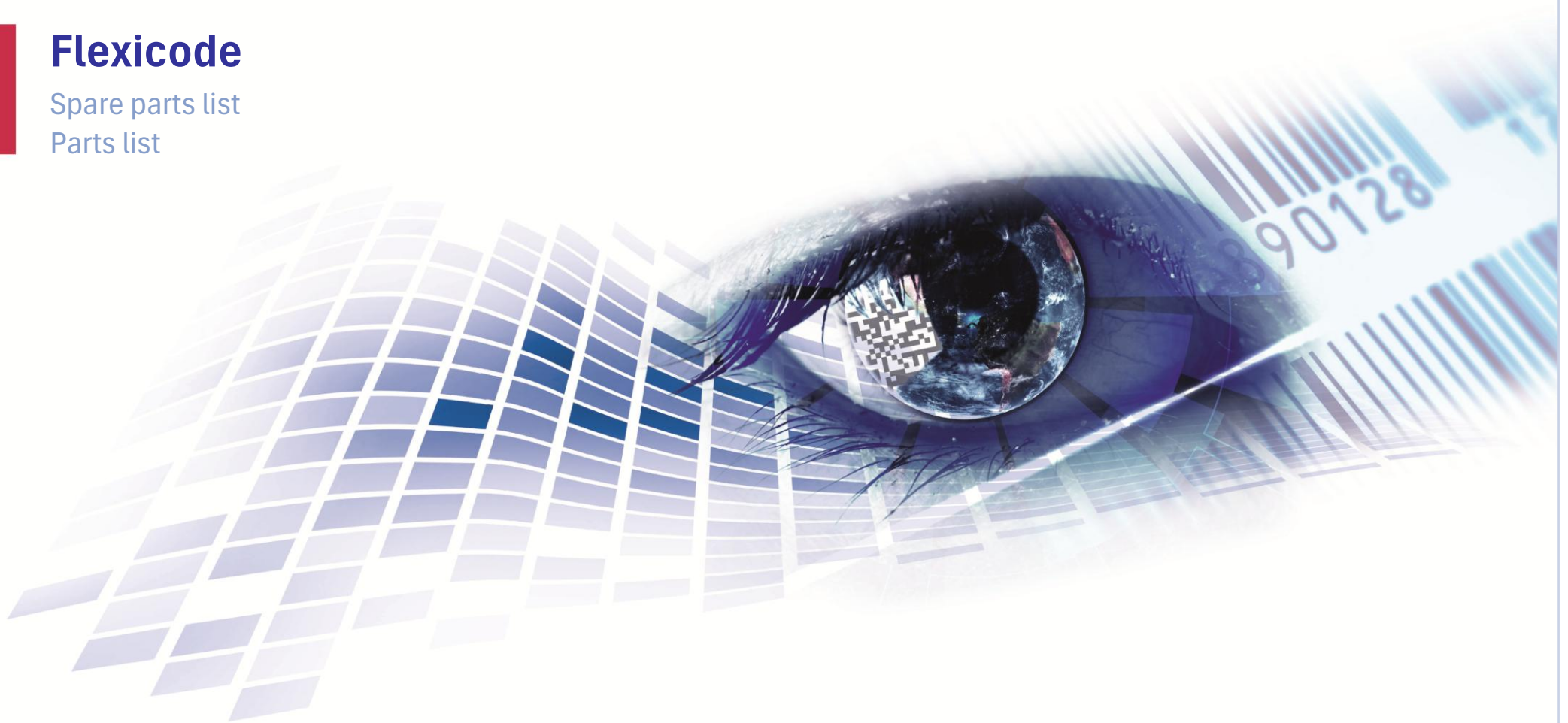


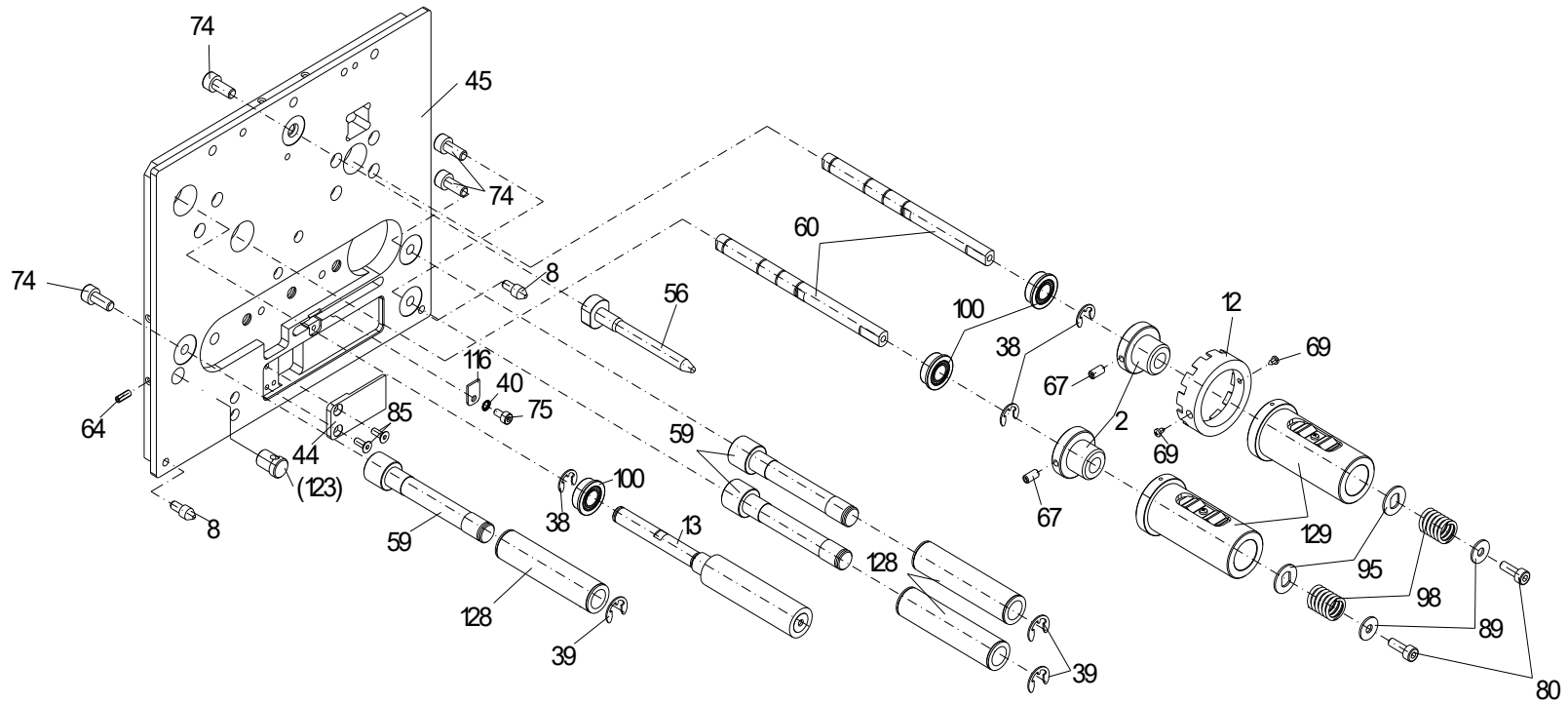
## Flexicode

Spare parts list  
Parts list



# 71.79.600

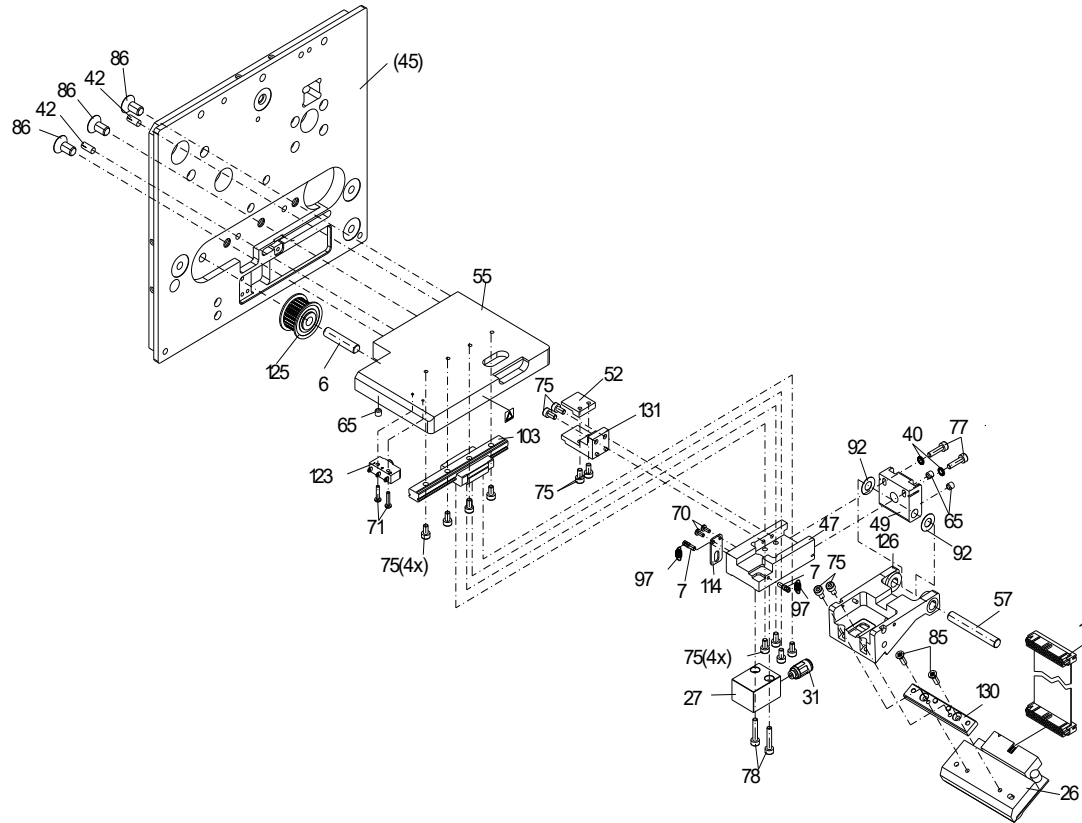
## Print mechanism Flexicode 53-12, right



Pos. 23 nicht gezeichnet!  
Pos. 23 not illustrated!  
Pos. 23 pas illustré!  
Pos. 23 sin ilustración!

# 71.79.600

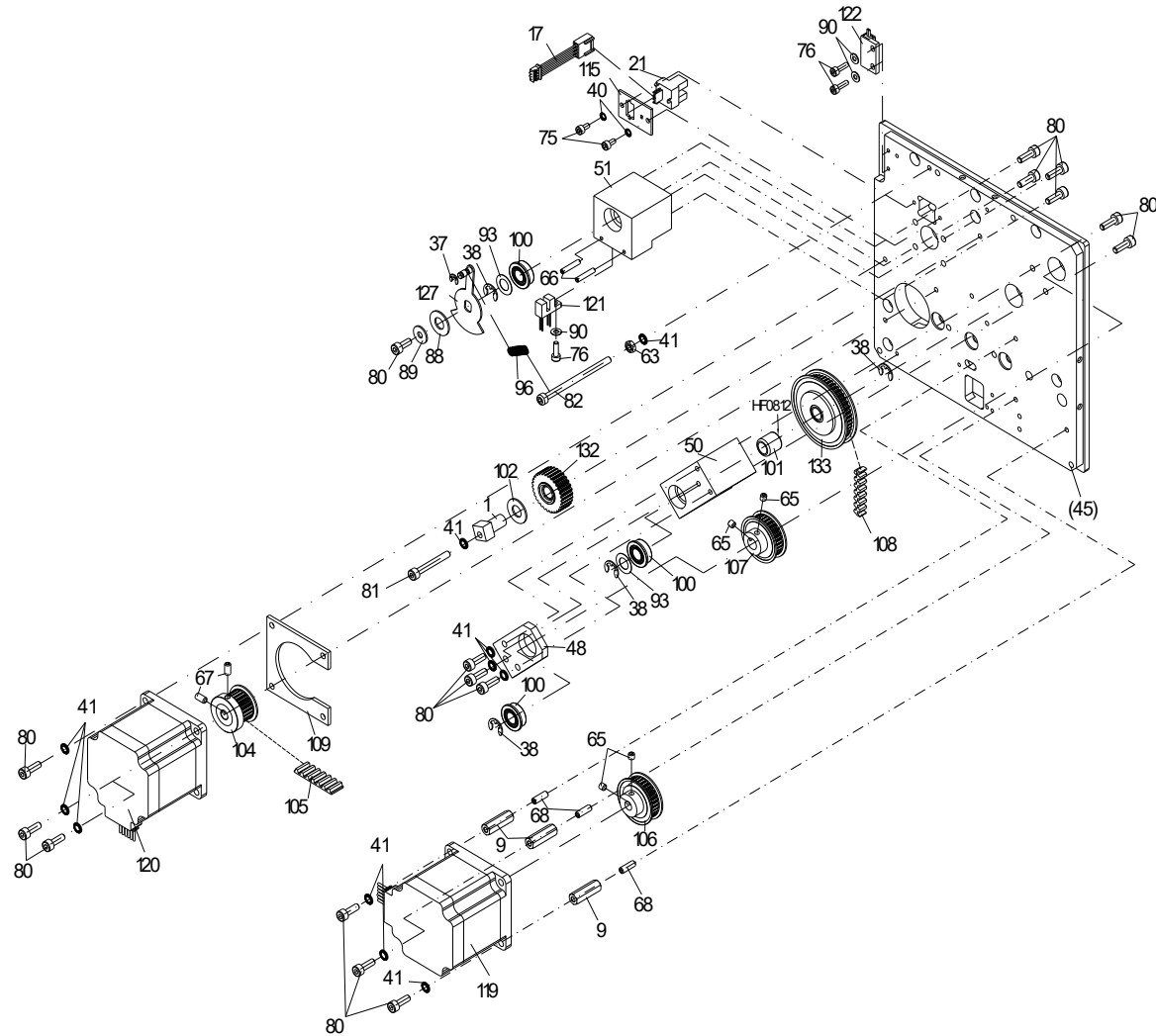
## Print mechanism Flexicode 53-12, right



Pos. 23 nicht gezeichnet!  
Pos. 23 not illustrated!  
Pos. 23 pas illustré!  
Pos. 23 sin ilustración!

# 71.79.600

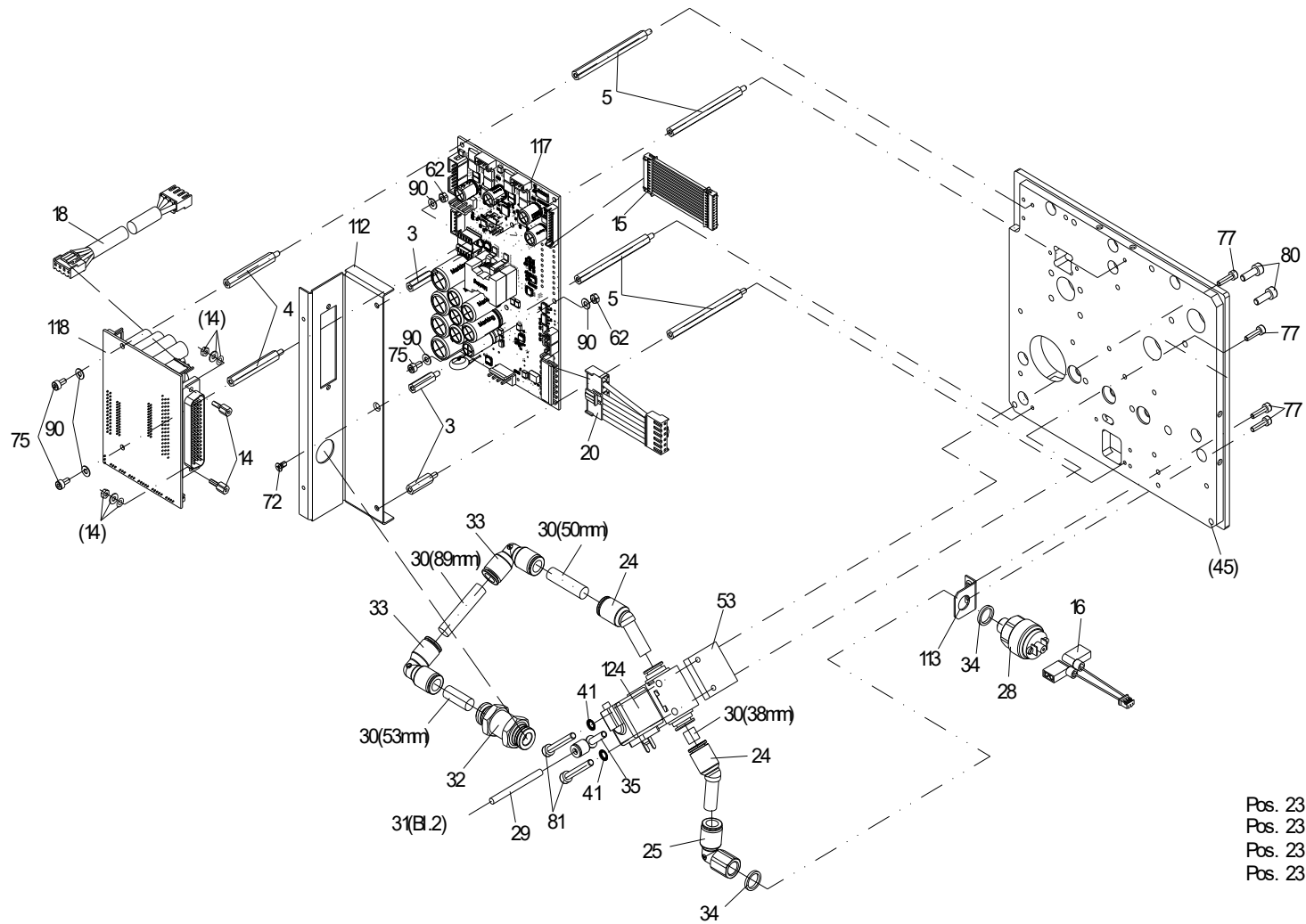
## Print mechanism Flexicode 53-12, right



Pos. 23 nicht gezeichnet!  
Pos. 23 not illustrated!  
Pos. 23 pas illustré!  
Pos. 23 sin ilustración!

# 71.79.600

## Print mechanism Flexicode 53-12, right





## 71.79.600

### Print mechanism Flexicode 53-12, right

Pos	Ident-No.	Description1	Description2	Quantity
1*	10.87.020	Eccentric bearing	Vario/SPE/DPM/SPX/Vita/Flexicode	1
2	10.88.001	Bearing bush	Spectra/SPE/DPM/SPX/Vita/Flexicode/ILX/ALP	2
3	12.40.318	DISTANCE BOLT M3 X 18,3		3
4	12.40.342	DISTANCE BOLT M3 X 42		2
5	12.40.362	DISTANCE BOLT M3 X 62		4
6	12.57.001	PIN		1
7	12.57.015	Spring pillar	Dynacode/Flexicode	2
8	12.79.001	Centering pin	Flexicode	2
9	12.88.410	Distance bolt M4x22.3		3
10	16.79.005	Handle	Flexicode/ILX	1
11	16.79.105	Cover	Flexicode 53	1
12	16.88.055	Sprocket wheel	Spectra/SPE/DPM/Vario/SPX/Vita/Flexicode/ALP	1
13*	18.79.100	Drive roller	Flexicode 53	1
14	25.04.100	SUB-D fixing set		1
15	28.79.010	Connecting cable motor signals	CPU-distributor plate	1
16	28.79.024	Connecting cable pressure switch-distributor plate	Flexicode	1
17	28.79.045	Connecting cable, encoder-distributor plate	Flexicode/Spectra II	1
18	28.79.050	Connecting cable power electronics-distrib plate	Flexicode/Spectra II	1
19*	28.79.055	Printhead cable, data signals	Flexicode 53	1
20	28.79.060	Connecting cable, pow electronics 24V-distr plate	Flexicode	1
21	31.03.035	Photocell		1
22	31.03.220	Magnet for Reed sensor		1
23	35.01.002	Cable joint 100x2.5 mm		5
24	36.12.401	Angle connection 45° 8 mm		2
25	36.13.401	L-screw joint connector 8 mm		1
26*	37.04.0535	Thermal printhead 53-12	Dynacode/Dynacode II/Flexicode	1

\*Recommended spare part

## 71.79.600

### Print mechanism Flexicode 53-12, right

Pos	Ident-No.	Description1	Description2	Quantity
27*	37.67.001	Short-stroke cylinder	DPM III/Dynacode/Flexicode/DPM IV	1
28*	37.67.002	Switch	DPM III/Dynacode/Flexicode	1
29*	37.67.025	Pneumatic tube 4 mm	DPM III/Dynacode/APX, in meters	0,25m
30*	37.67.026	Pneumatic tube 8 mm	DPM III/Dynacode/Flexicode, in meters	0,23m
31	37.67.030	Screw joint connector 4 mm/M5	Dynacode/Flexicode/APX	1
32	37.67.042	Screw joint 8 mm	DPM III/Flexicode	1
33	37.67.066	Angular screw joint	APX/DPM III/Flexicode	2
34*	37.67.075	Seal ring	DPM III/Dynacode/Flexicode	2
35	37.67.089	Connection 4 mm		1
36	37.79.020	Lock	Flexicode	1
37	40.01.003V	Shaft protection 3.2 mm stainless		1
38	40.01.006V	Shaft protection 6 mm stainless		7
39	40.01.007V	Shaft protection 7 mm stainless		3
40	41.03.003V	Lock washer M3 stainless		7
41	41.03.004V	Lock washer M4 stainless		13
42	42.13.410V	TAPER PIN 4x10 S2 DIN 1472		2
43	42.13.414V	Grooved pin 4 x 14 mm		2
44	45.57.080	Cover		1
45	45.79.001	Carrier plate		1
46	45.79.015	Plate	Flexicode, right	1
47	45.79.020	GUIDING CARRIAGE		1
48	45.79.040	COUNTER BEARING		1
49	45.79.045	Adjusting device	Flexicode	1
50	45.79.050	Bearing for ribbon rewinder	Flexicode	1
51	45.79.055	Bearing for ribbon unwinder	Flexicode	1
52	45.79.060	CLAMPING PIECE		1

\*Recommended spare part

## 71.79.600

### Print mechanism Flexicode 53-12, right

Pos	Ident-No.	Description1	Description2	Quantity
53	45.79.085	Bracket for valve	Flexicode	1
54	45.79.105	Cover plate	Flexicode 53	1
55	45.79.110	Sole plate		1
56	46.57.100	Centering ledge	Dynacode 53/Flexicode /ILX	1
57	46.79.030	Printhead shaft	Flexicode	1
58	46.79.105	Centering bearing	Flexicode 53	1
59	46.79.115	Bearing pillar		3
60	46.79.120	Ribbon rewinding/unwinding shaft	Flexicode 53	2
61	47.03.003V	Hexagon nut M3 stainless		2
62	47.04.001V	Hexagon nut M3 stainless		2
63	47.05.001V	Hexagon nut M4 stainless		1
64	48.09.308V	Setscrew M3x8 stainless		1
65	48.10.005V	Setscrew M4x4 stainless		7
66	48.10.006	Setscrew M3x16		2
67	48.10.408V	Setscrew M4x8 stainless		4
68	48.10.412V	Setscrew M4x12 stainless		3
69	48.13.212	Screw 22x4.5		2
70	48.14.105V	Pan screw M2x5 stainless		2
71	48.14.110V	Pan screw M2x10 stainless		2
72	48.15.003V	Countersunk screw M3x6 stainless		11
73	48.15.310V	Countersunk screw M3x10 stainless		2
74	48.16.006V	Socket cap screw M5x12		7
75	48.16.306V	Socket cap screw M3x6 stainless		20
76	48.16.310V	Socket cap screw M3x10 stainless		3
77	48.16.312V	Socket cap screw M3x12 stainless		6
78	48.16.316V	Socket cap screw M3x16 stainless		2

\*Recommended spare part

## 71.79.600

### Print mechanism Flexicode 53-12, right

Pos	Ident-No.	Description1	Description2	Quantity
79	48.16.406V	Socket cap screw M4x6 stainless		4
80	48.16.412V	Socket cap screw M4x12 stainless		18
81	48.16.430V	Socket cap screw M4x30 stainless		3
82	48.16.460V	Socket cap screw M4x60 stainless		1
83	48.16.508V	Socket cap screw M5x8 stainless		1
84	48.18.004	SPRING PRESSURE PART		1
85	48.19.308V	Socket cap screw M3x8 stainless		4
86	48.19.612V	Socket cap screw M6x12 stainless		3
87	48.20.616V	Socket cap screw M6x16 stainless		2
88	50.01.012	Lock washer 18x8.15x1.0 stainless		1
89	50.01.046V	Lock washer M4 stainless		3
90	50.01.057V	Washer 3.2 stainless		8
91	50.01.068	Lock washer 7x4.1x0.2 stainless		4
92	50.50.602	Washer 6x12x0.2		4
93	50.50.802	Washer 8x14x0.2		2
94	50.52.201	Washer 22x30x0,1		1
95*	50.88.001	Striker arm plate	Spectra/SPE/SPX/DPM III+IV/Vario II/Vita/FC/ALP	2
96*	52.55.010	Tension spring		1
97*	52.57.020	Tension spring	Dynacode/Flexicode	2
98*	52.88.005	Compression spring	Spectra/DPM/SPE/Vario/SPX/Vita/Flexicode/ALP	2
99	55.79.001	Company logo "Valentin"		1
100*	57.01.007	Grooved ball bearing		6
101*	57.01.015	Free-wheel HF 0812		1
102*	57.02.029	Washer		1
103*	57.79.045	Slide mounting	Flexicode	1
104	59.57.005	Toothed belt wheel	Dynacode/Flexicode	1

\*Recommended spare part

## 71.79.600

### Print mechanism Flexicode 53-12, right

Pos	Ident-No.	Description1	Description2	Quantity
105*	59.79.285	Toothed belt	Flexicode	1
106	59.88.031	Toothed belt wheel	Spectra/SPE/SPX/Vita/Dynacode/Flexicode/Duoprint	1
107	59.88.032	Toothed belt wheel	Spectra/SPE/SPX/Vita/Flexicode/ALP	1
108*	59.88.406	Toothed belt	Spectra/SPE/Vita/Flexicode	1
109	67.57.030	INTERMEDIATE PLATE		1
110	67.79.005	Cover, behind high	Flexicode	1
111	67.79.010	Cover, behind low		1
112	67.79.015	Connecting plate	Flexicode	1
113	67.79.035	Angular stay		1
114	67.79.040	Stopper plate	Flexicode	1
115	67.79.050	BRACKET FOR PHOTO CELL		1
116	67.79.055	CLAMPING PLATE		1
117*	70.39.402	Power electronics	Flexicode	1
118*	70.79.005	Distribution board power electronics	Flexicode	1
119	71.79.001	Stepper motor for transfer ribbon cpl	Flexicode	1
120	71.79.005	Stepper motor feed cpl	Flexicode	1
121	71.79.010	Ribbon photocell	Flexicode	1
122	71.79.013	Reed sensor	Flexicode	1
123*	71.79.016	Limit switch cpl	Flexicode	1
124*	71.79.020	Valve cpl	Flexicode/DPM IV	1
125	72.57.001	Toothed belt wheel cpl	Dynacode/Flexicode	1
126	72.79.030	Printhead bracket cpl	Flexicode	1
127	72.79.045	Backfeed plate cpl	Flexicode/Spectra II/LPM II/SPE II	1
128*	72.79.110	Return pulley cpl	Flexicode 53	3
129*	72.79.125	Ribbon rewinding/unwinding roller cpl	Flexicode 53	2
130	72.79.140	Printhead ledge	Flexicode 53	1

\*Recommended spare part

## 71.79.600

Print mechanism Flexicode 53-12, right

Pos	Ident-No.	Description1	Description2	Quantity
131	72.79.150	Bracket cpl	Flexicode 53	1
132*	72.87.034	Toothed belt wheel cpl	SPE/SPX/Flexicode/ILX 10X	1
133*	72.88.048	Toothed belt wheel cpl	Spectra/SPE/Vario/SPX/Vita/Flexicode/ILX/ALP	1

\*Recommended spare part

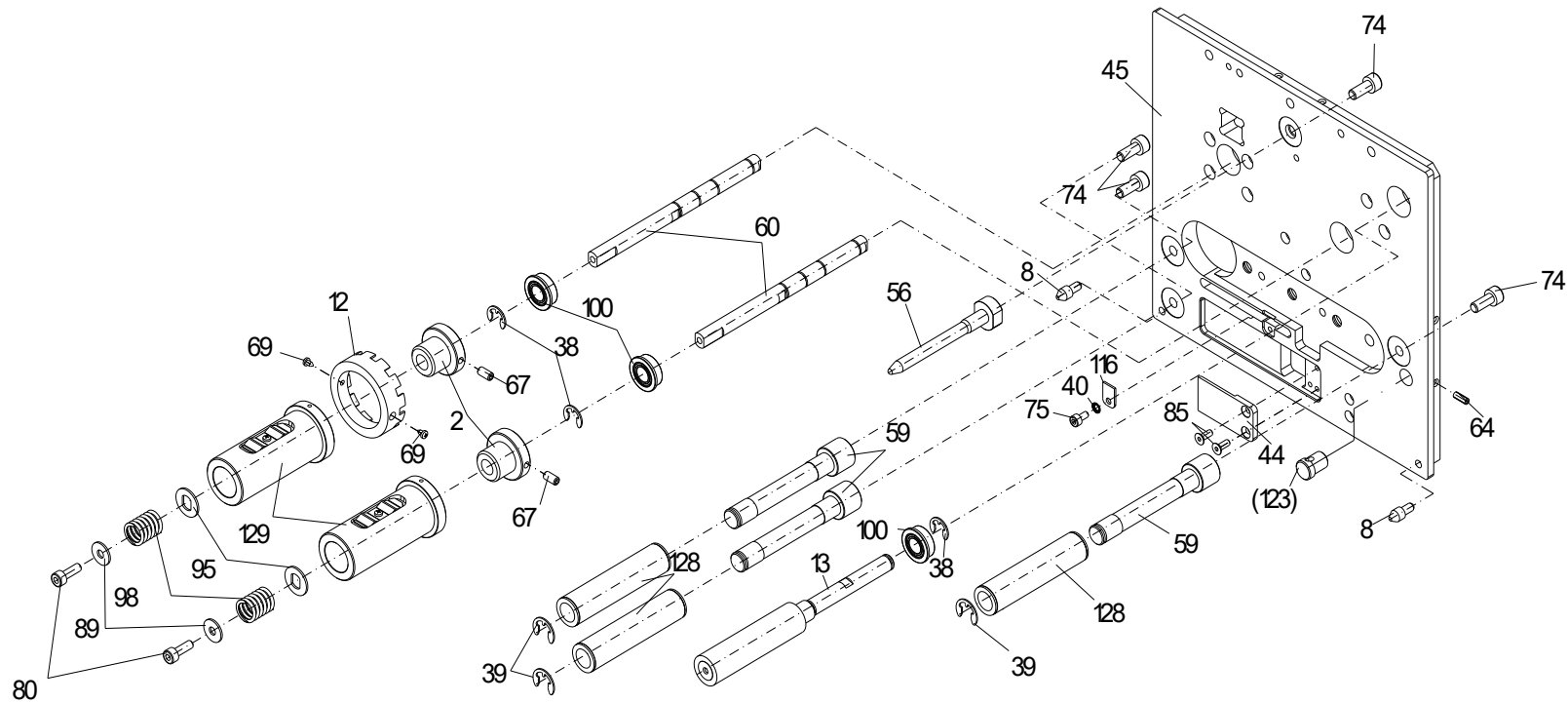
Modifications and errors excepted

Flexicode: 11.2025

12 / 45

# 71.79.650

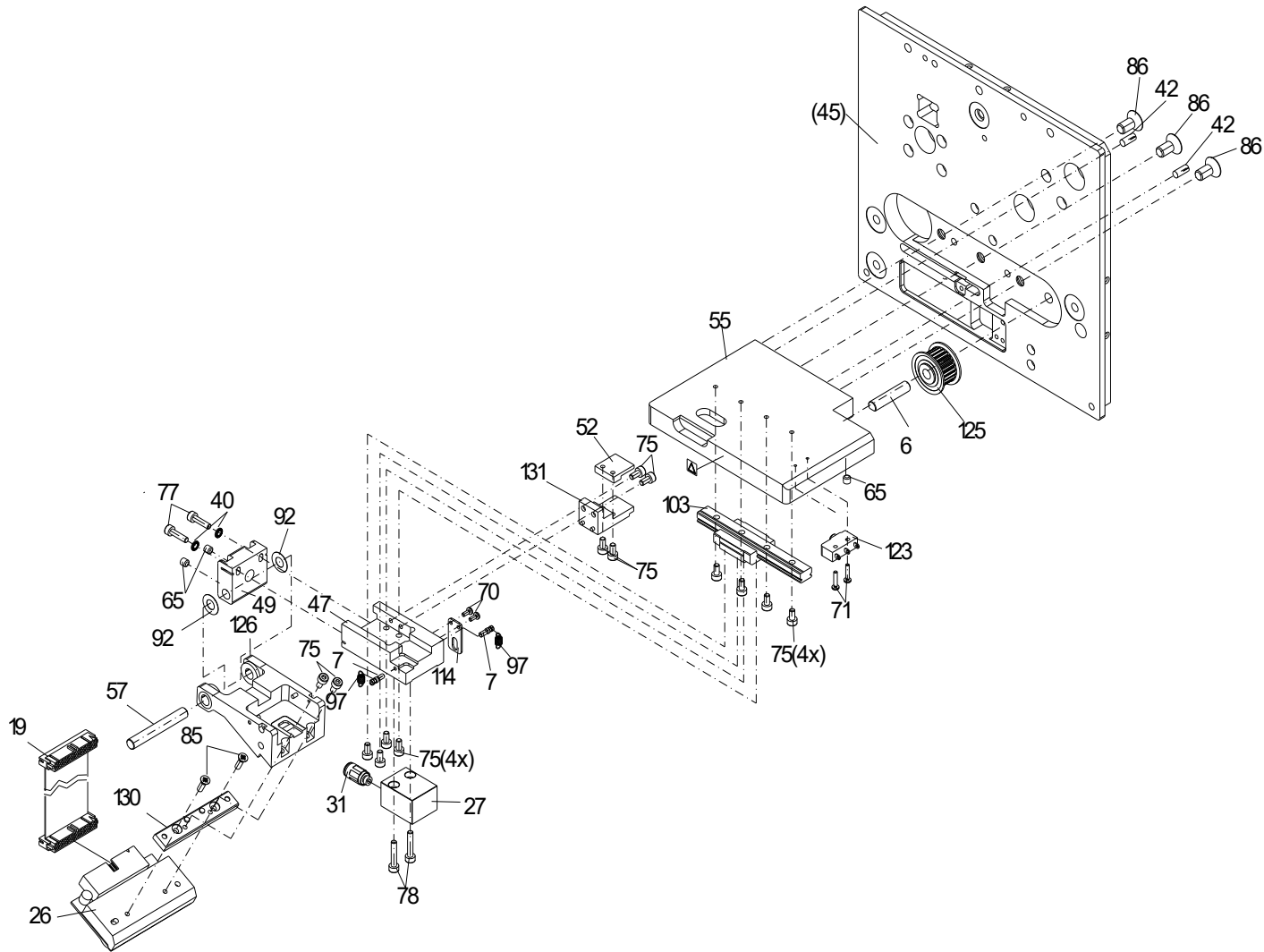
## Print mechanism Flexicode 53-12, left



Pos. 23 nicht gezeichnet!  
Pos. 23 not illustrated!  
Pos. 23 pas illustré!  
Pos. 23 sin ilustración!

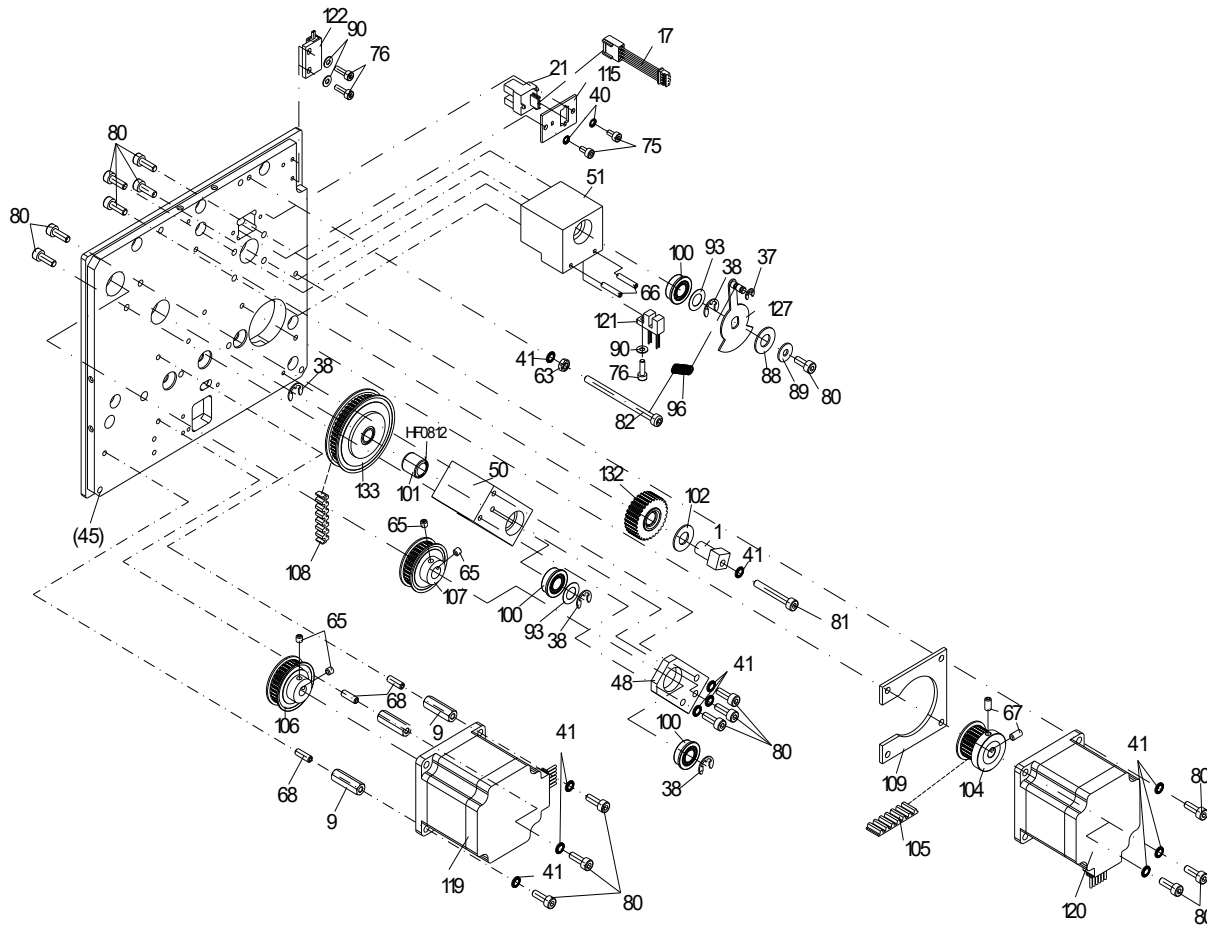
# 71.79.650

## Print mechanism Flexicode 53-12, left



# 71.79.650

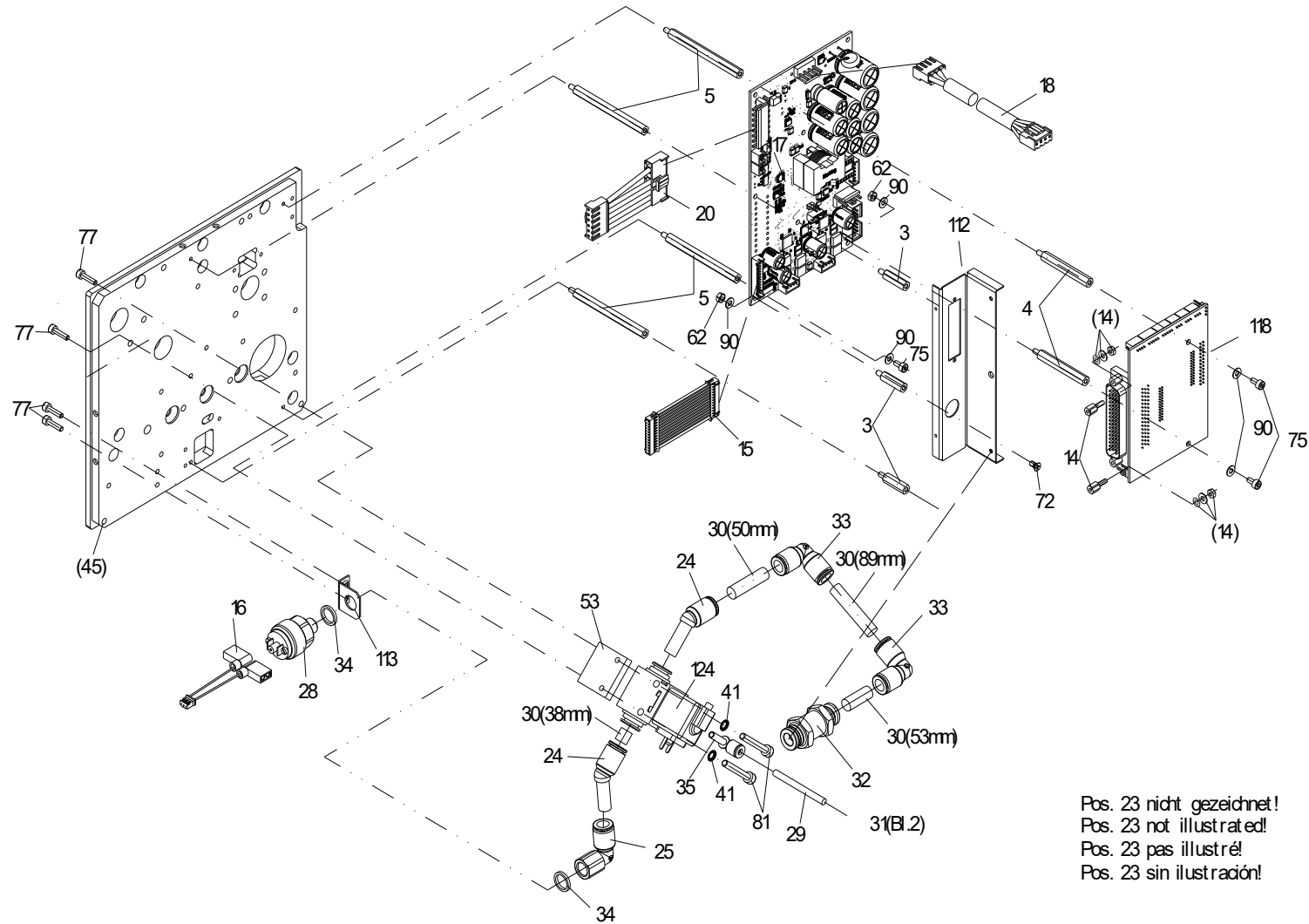
## Print mechanism Flexicode 53-12, left



Pos. 23 nicht gezeichnet!  
Pos. 23 not illustrated!  
Pos. 23 pas illustré!  
Pos. 23 sin ilustración!

# 71.79.650

## Print mechanism Flexicode 53-12, left



Pos. 23 nicht gezeichnet!  
Pos. 23 not illustrated!  
Pos. 23 pas illustré!  
Pos. 23 sin ilustración!



## 71.79.650

### Print mechanism Flexicode 53-12, left

Pos	Ident-No.	Description1	Description2	Quantity
1*	10.87.020	Eccentric bearing	Vario/SPE/DPM/SPX/Vita/Flexicode	1
2	10.88.001	Bearing bush	Spectra/SPE/DPM/SPX/Vita/Flexicode/ILX/ALP	2
3	12.40.318	DISTANCE BOLT M3 X 18,3		3
4	12.40.342	DISTANCE BOLT M3 X 42		2
5	12.40.362	DISTANCE BOLT M3 X 62		4
6	12.57.001	PIN		1
7	12.57.015	Spring pillar	Dynacode/Flexicode	2
8	12.79.001	Centering pin	Flexicode	2
9	12.88.410	Distance bolt M4x22.3		3
10	16.79.005	Handle	Flexicode/ILX	1
11	16.79.105	Cover	Flexicode 53	1
12	16.88.055	Sprocket wheel	Spectra/SPE/DPM/Vario/SPX/Vita/Flexicode/ALP	1
13*	18.79.100	Drive roller	Flexicode 53	1
14	25.04.100	SUB-D fixing set		1
15	28.79.010	Connecting cable motor signals	CPU-distributor plate	1
16	28.79.024	Connecting cable pressure switch-distributor plate	Flexicode	1
17	28.79.045	Connecting cable, encoder-distributor plate	Flexicode/Spectra II	1
18	28.79.050	Connecting cable power electronics-distrib plate	Flexicode/Spectra II	1
19*	28.79.055	Printhead cable, data signals	Flexicode 53	1
20	28.79.060	Connecting cable, pow electronics 24V-distr plate	Flexicode	1
21	31.03.035	Photocell		1
22	31.03.220	Magnet for Reed sensor		1
23	35.01.002	Cable joint 100x2.5 mm		5
24	36.12.401	Angle connection 45° 8 mm		2
25	36.13.401	L-screw joint connector 8 mm		1
26*	37.04.0535	Thermal printhead 53-12	Dynacode/Dynacode II/Flexicode	1

\*Recommended spare part

## 71.79.650

### Print mechanism Flexicode 53-12, left

Pos	Ident-No.	Description1	Description2	Quantity
27*	37.67.001	Short-stroke cylinder	DPM III/Dynacode/Flexicode/DPM IV	1
28*	37.67.002	Switch	DPM III/Dynacode/Flexicode	1
29*	37.67.025	Pneumatic tube 4 mm	DPM III/Dynacode/APX, in meters	0,25m
30*	37.67.026	Pneumatic tube 8 mm	DPM III/Dynacode/Flexicode, in meters	0,23m
31	37.67.030	Screw joint connector 4 mm/M5	Dynacode/Flexicode/APX	1
32	37.67.042	Screw joint 8 mm	DPM III/Flexicode	1
33	37.67.066	Angular screw joint	APX/DPM III/Flexicode	2
34*	37.67.075	Seal ring	DPM III/Dynacode/Flexicode	2
35	37.67.089	Connection 4 mm		1
36	37.79.020	Lock	Flexicode	1
37	40.01.003V	Shaft protection 3.2 mm stainless		1
38	40.01.006V	Shaft protection 6 mm stainless		7
39	40.01.007V	Shaft protection 7 mm stainless		3
40	41.03.003V	Lock washer M3 stainless		7
41	41.03.004V	Lock washer M4 stainless		13
42	42.13.410V	TAPER PIN 4x10 S2 DIN 1472		2
43	42.13.414V	Grooved pin 4 x 14 mm		2
44	45.57.080	Cover		1
45	45.79.005	Carrier plate		1
46	45.79.010	Plate	Flexicode, left	1
47	45.79.025	GUIDING CARRIAGE		1
48	45.79.040	COUNTER BEARING		1
49	45.79.045	Adjusting device	Flexicode	1
50	45.79.050	Bearing for ribbon rewinder	Flexicode	1
51	45.79.055	Bearing for ribbon unwinder	Flexicode	1
52	45.79.060	CLAMPING PIECE		1

\*Recommended spare part

## 71.79.650

### Print mechanism Flexicode 53-12, left

Pos	Ident-No.	Description1	Description2	Quantity
53	45.79.085	Bracket for valve	Flexicode	1
54	45.79.105	Cover plate	Flexicode 53	1
55	45.79.115	Sole plate		1
56	46.57.100	Centering ledge	Dynacode 53/Flexicode /ILX	1
57	46.79.030	Printhead shaft	Flexicode	1
58	46.79.105	Centering bearing	Flexicode 53	1
59	46.79.115	Bearing pillar		3
60	46.79.120	Ribbon rewinding/unwinding shaft	Flexicode 53	2
61	47.03.003V	Hexagon nut M3 stainless		2
62	47.04.001V	Hexagon nut M3 stainless		1
63	47.05.001V	Hexagon nut M4 stainless		2
64	48.09.308V	Setscrew M3x8 stainless		1
65	48.10.005V	Setscrew M4x4 stainless		7
66	48.10.006	Setscrew M3x16		2
67	48.10.408V	Setscrew M4x8 stainless		4
68	48.10.412V	Setscrew M4x12 stainless		3
69	48.13.212	Screw 22x4.5		2
70	48.14.105V	Pan screw M2x5 stainless		2
71	48.14.110V	Pan screw M2x10 stainless		2
72	48.15.003V	Countersunk screw M3x6 stainless		11
73	48.15.310V	Countersunk screw M3x10 stainless		2
74	48.16.006V	Socket cap screw M5x12		7
75	48.16.306V	Socket cap screw M3x6 stainless		20
76	48.16.310V	Socket cap screw M3x10 stainless		3
77	48.16.312V	Socket cap screw M3x12 stainless		6
78	48.16.316V	Socket cap screw M3x16 stainless		2

\*Recommended spare part

## 71.79.650

### Print mechanism Flexicode 53-12, left

Pos	Ident-No.	Description1	Description2	Quantity
79	48.16.406V	Socket cap screw M4x6 stainless		4
80	48.16.412V	Socket cap screw M4x12 stainless		18
81	48.16.430V	Socket cap screw M4x30 stainless		3
82	48.16.460V	Socket cap screw M4x60 stainless		1
83	48.16.508V	Socket cap screw M5x8 stainless		1
84	48.18.004	SPRING PRESSURE PART		1
85	48.19.308V	Socket cap screw M3x8 stainless		4
86	48.19.612V	Socket cap screw M6x12 stainless		3
87	48.20.616V	Socket cap screw M6x16 stainless		2
88	50.01.012	Lock washer 18x8.15x1.0 stainless		1
89	50.01.046V	Lock washer M4 stainless		3
90	50.01.057V	Washer 3.2 stainless		8
91	50.01.068	Lock washer 7x4.1x0.2 stainless		4
92	50.50.602	Washer 6x12x0.2		4
93	50.50.802	Washer 8x14x0.2		2
94	50.52.201	Washer 22x30x0,1		1
95*	50.88.001	Striker arm plate	Spectra/SPE/SPX/DPM III+IV/Vario II/Vita/FC/ALP	2
96*	52.55.010	Tension spring		1
97*	52.57.020	Tension spring	Dynacode/Flexicode	2
98*	52.88.005	Compression spring	Spectra/DPM/SPE/Vario/SPX/Vita/Flexicode/ALP	2
99	55.79.001	Company logo "Valentin"		1
100*	57.01.007	Grooved ball bearing		6
101*	57.01.015	Free-wheel HF 0812		1
102*	57.02.029	Washer		1
103*	57.79.045	Slide mounting	Flexicode	1
104	59.57.005	Toothed belt wheel	Dynacode/Flexicode	1

\*Recommended spare part

## 71.79.650

### Print mechanism Flexicode 53-12, left

Pos	Ident-No.	Description1	Description2	Quantity
105*	59.79.285	Toothed belt	Flexicode	1
106	59.88.031	Toothed belt wheel	Spectra/SPE/SPX/Vita/Dynacode/Flexicode/Duoprint	1
107	59.88.032	Toothed belt wheel	Spectra/SPE/SPX/Vita/Flexicode/ALP	1
108*	59.88.406	Toothed belt	Spectra/SPE/Vita/Flexicode	1
109	67.57.030	INTERMEDIATE PLATE		1
110	67.79.005	Cover, behind high	Flexicode	1
111	67.79.010	Cover, behind low		1
112	67.79.015	Connecting plate	Flexicode	1
113	67.79.035	Angular stay		1
114	67.79.040	Stopper plate	Flexicode	1
115	67.79.050	BRACKET FOR PHOTO CELL		1
116	67.79.055	CLAMPING PLATE		1
117*	70.39.402	Power electronics	Flexicode	1
118*	70.79.005	Distribution board power electronics	Flexicode	1
119	71.79.001	Stepper motor for transfer ribbon cpl	Flexicode	1
120	71.79.005	Stepper motor feed cpl	Flexicode	1
121	71.79.010	Ribbon photocell	Flexicode	1
122	71.79.013	Reed sensor	Flexicode	1
123*	71.79.016	Limit switch cpl	Flexicode	1
124*	71.79.020	Valve cpl	Flexicode/DPM IV	1
125	72.57.001	Toothed belt wheel cpl	Dynacode/Flexicode	1
126	72.79.030	Printhead bracket cpl	Flexicode	1
127	72.79.045	Backfeed plate cpl	Flexicode/Spectra II/LPM II/SPE II	1
128*	72.79.110	Return pulley cpl	Flexicode 53	3
129*	72.79.125	Ribbon rewinding/unwinding roller cpl	Flexicode 53	2
130	72.79.140	Printhead ledge	Flexicode 53	1

\*Recommended spare part

## 71.79.650

Print mechanism Flexicode 53-12, left

Pos	Ident-No.	Description1	Description2	Quantity
131	72.79.150	Bracket cpl	Flexicode 53	1
132*	72.87.034	Toothed belt wheel cpl	SPE/SPX/Flexicode/ILX 10X	1
133	72.88.049	Toothed belt wheel cpl	Spectra/SPE/SPX/Flexicode/ILX	1

\*Recommended spare part

Modifications and errors excepted

Flexicode: 11.2025

23 / 45



## 71.79.900

### Control unit Flexicode, desktop enclosure

Pos	Ident-No.	Description1	Description2	Quantity
1	12.40.213	DISTANCE BOLT		2
2	12.40.434	Distance bolt M4x34.8		2
3*	16.01.011	Elastic bumper self-adhesive 20.6x20.6x7.6 mm		4
4	23.01.040	Filter		1
5*	24.02.009	Fine-wire fuse 4.0 A 5x20		2
6	25.04.100	SUB-D fixing set		1
7	26.01.030	Power switch	DPM III "GEA"/FLEXICODE	1
8*	26.79.005	Foil keyboard	Flexicode	1
9	28.29.010	Connecting cable I/O-CPU	Pica II/Flexicode/SPE II	1
10	28.30.081	Grounded conductor 2	Vario/DPM/SPE/Dynacode/Pica/Flexicode/SPE II	1
11	28.30.086	Grounded conductor 6	SPX/VITA/Flexicode/Dynacode/SPE II	2
12	28.30.089	Grounded conductor 1	Spectra/DPM/SPE/Dynacode/SPX/Vita/Flexicode	1
13	28.57.005	POWER LINE		1
14	28.57.014	Connecting cable, protective conductor/GND	Dynacode/Flexicode	1
15	28.79.001	Connecting cable 24 V distributor plate/CPU	FLEXICODE	1
16	28.79.005	Connecting cable power supply/distributor plate	Flexicode, 48 V, control unit	1
17	28.79.010	Connecting cable motor signals	CPU-distributor plate	1
18	28.79.015	Connecting cable	Printhead signal CPU/distributor plate	1
19	28.79.020	Connecting cable sensors CPU/distributor plate		1
20	28.79.025	Connecting cable USB-CPU	Flexicode/Dynacode II/SPE II	1
21	28.79.030	Connecting cable encoder back panel/CPU	Flexicode	1
22	28.79.035	Connecting cable control unit/CPU	Flexicode	1
23	28.79.070	Grounded conductor	Flexicode	1
24	35.01.002	Cable joint 100x2.5 mm		1
25	35.01.070	Locking cap USB/A connector		1
26	37.79.001	Power supply TDK LS150-48	Flexicode	1

\*Recommended spare part

## 71.79.900

### Control unit Flexicode, desktop enclosure

Pos	Ident-No.	Description1	Description2	Quantity
27	37.88.001	Rubber-sponge		0,01
28	41.02.002V	Fan shaped washer M4 stainless		2
29	47.01.001V	Hexagon nut M2 stainless		2
30	47.04.001V	Hexagon nut M3 stainless		8
31	47.05.001V	Hexagon nut M4 stainless		1
32	48.14.110V	Pan screw M2x10 stainless		2
33	48.14.208V	Pan screw M2.5x8 stainless		6
34	48.16.306V	Socket cap screw M3x6 stainless		9
35	48.16.410V	Socket cap screw M4x10 stainless		4
36	48.19.306V	Socket cap screw M3x6 stainless		4
37	48.24.306V	Pan screw M3x6 stainless		4
38	50.01.009V	Lock washer M2 stainless		4
39	50.01.046V	Lock washer M4 stainless		1
40	50.01.057V	Washer 3.2 stainless		17
41	50.01.065V	Lock washer 4.3 stainless		6
42	50.01.069V	Lock washer M2.7 stainless		6
43	67.57.062	CF card cover	Dynacode II/DPM IV/ILX 10X/SPE II	1
44	67.79.080	Front panel control unit		1
45	67.79.085	BACK PANEL	CONTROL UNIT FLEXICODE	1
46	67.79.090	Bottom turret control unit	Flexicode	1
47	67.79.096	Cover control unit	Flexicode	1
48*	70.39.005	I/O plate cpl		1
49	70.39.061	Adapter plate USB type A, vertical	Flexicode	1
50*	70.79.001	CPU	Flexicode	1
51	70.79.006	Distribution board control unit	Flexicode	1
52*	71.83.030A	Control unit SH3-III cpl	SPX/Flexicode	1

\*Recommended spare part

## 72.79.990

Connecting parts pneumatic/electronics

Flexicode

Pos	Ident-No.	Description1	Description2	Quantity
1	24.01.012	Power cable 2 m		1
2	28.79.090	Connecting cable print mechanism-control unit	50-pin 2.5 m	1
3	37.67.015	Miniature controller	DPM III/DPM IV/Dynacode/Flexicode	1
4	37.67.020	Manometer	DPM III/DPM IV/Dynacode/Flexicode	1
5*	37.67.026	Pneumatic tube 8 mm	DPM III/Dynacode/Flexicode, in meters	1,00m
6	37.67.035	Screw joint connector 8 mm	DPM III/DPM IV/Dynacode/Flexicode/APL/APX	2
7	89.02.008	Data cable D-SUB 25-pin plug/plug 1.8 m		1

\*Recommended spare part

Modifications and errors excepted

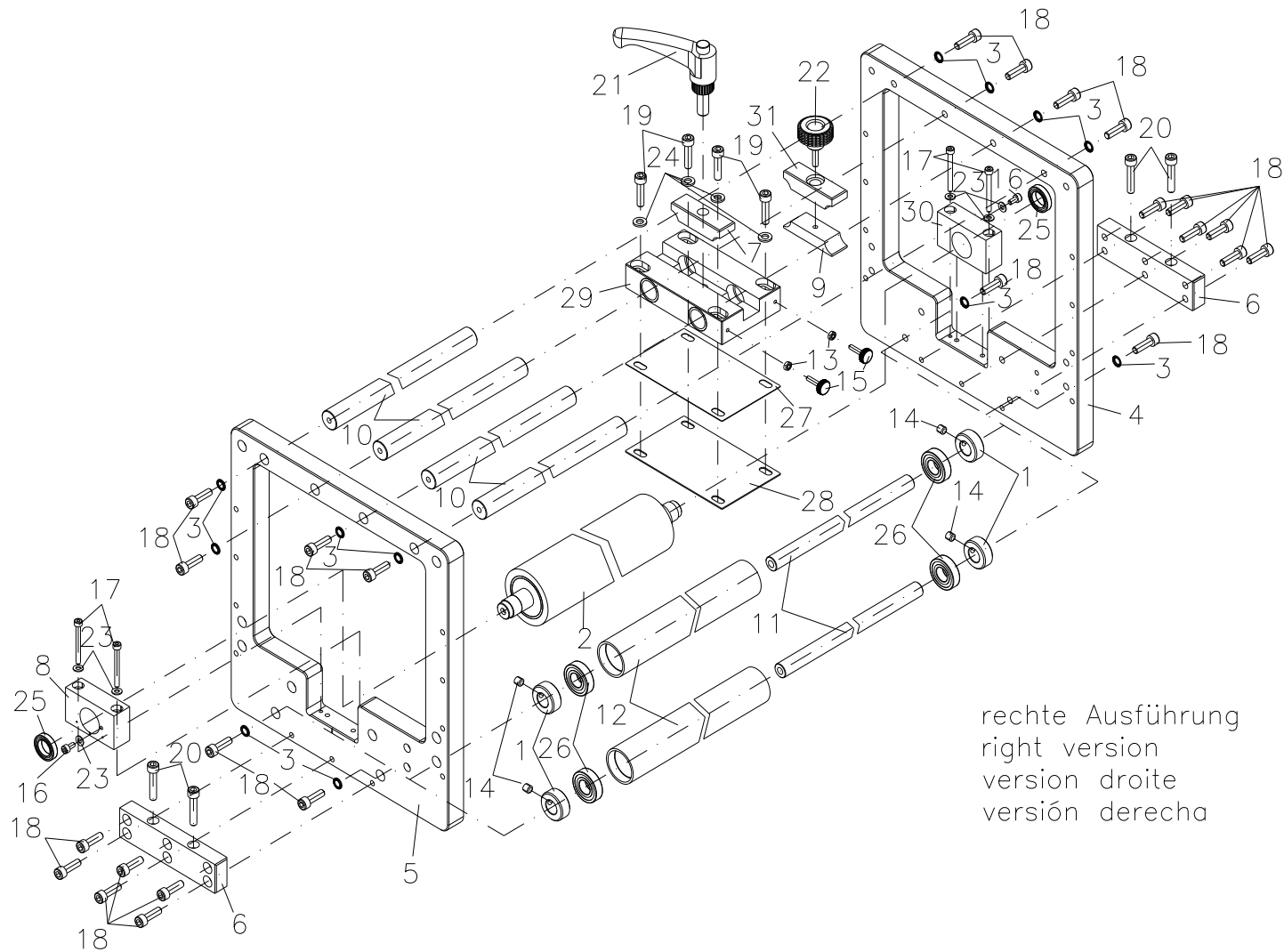
Flexicode: 11.2025

27 / 45

# 72.57.995A

Mounting frame continous

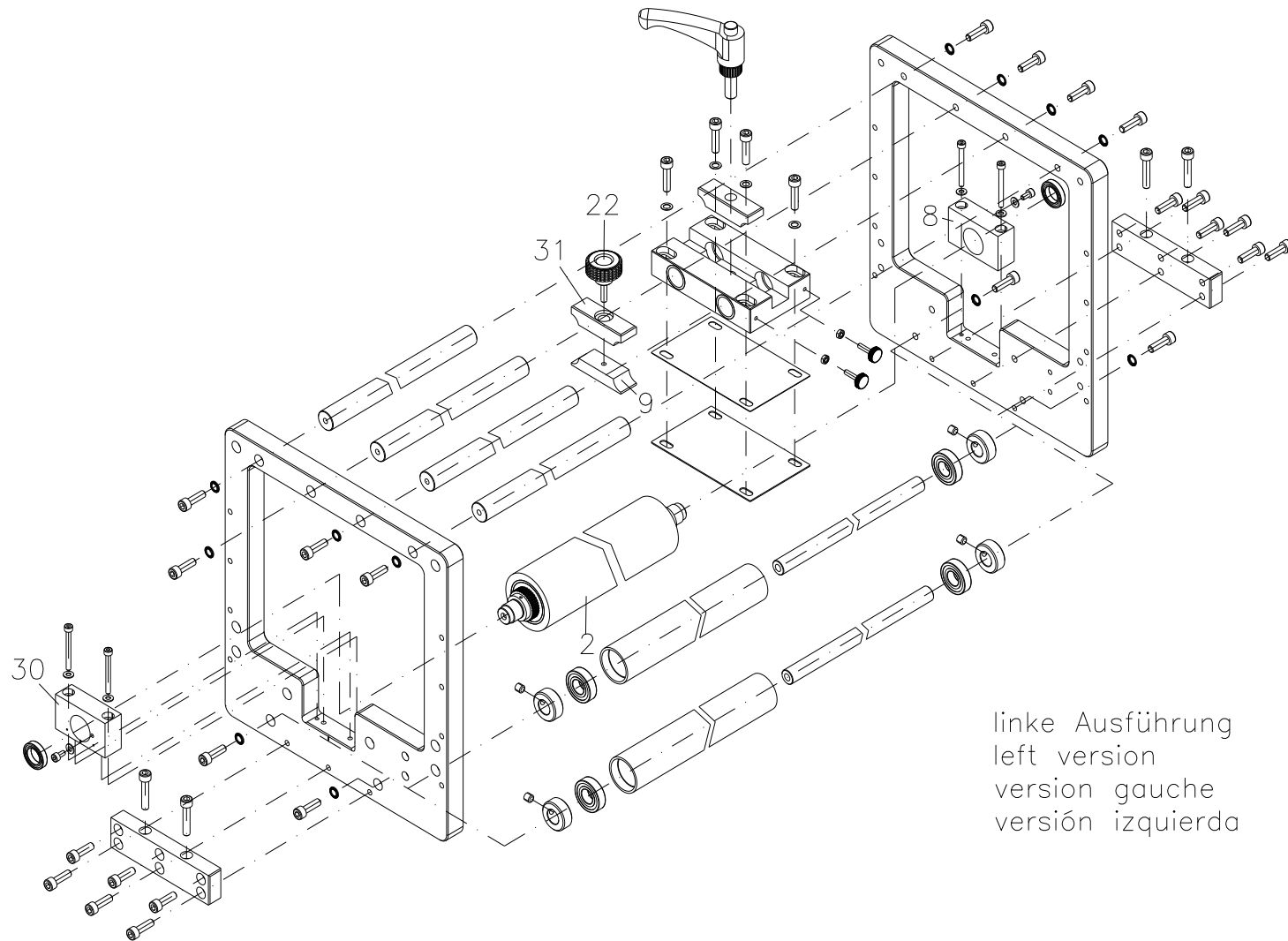
Dynacode/Flexicode



# 72.57.995A

Mounting frame continous

Dynacode/Flexicode



linke Ausführung  
left version  
version gauche  
versión izquierda

## 72.57.995A

### Mounting frame continous

#### Dynacode/Flexicode

Pos	Ident-No.	Description1	Description2	Quantity
1	10.57.401	Adjusting ring for mounting frame	Dynacode/Flexicode	4
2	18.67.014	Pressure roller cpl 340 mm	Dynacode/Flexicode	1
	18.67.015	Pressure roller cpl 250 mm	Dynacode/Flexicode	1
	18.67.017	Pressure roller cpl 430 mm	Dynacode/Flexicode	1
	18.67.018	Pressure roller cpl 620 mm	Dynacode/Flexicode	1
	18.67.019	Pressure roller cpl 470 mm	Dynacode/Flexicode	1
	18.67.020	Pressure roller cpl 770 mm	Dynacode/Flexicode	1
3	41.03.006V	Lock washer M6 stainless		12
4	45.57.410	Main plate, right, for mounting frame	Dynacode/Flexicode	1
5	45.57.415	Main plate, left, for mounting frame	Dynacode/Flexicode	1
6	45.57.425	Connecting part	Dynacode/Flexicode	2
7	45.67.580	Clamping piece above, for mounting frame	Dynacode/Flexicode	1
8	45.67.585	Bearing for pressure roller mounting frame	Dynacode/Flexicode	1
9	45.67.590	Clamping piece below, for mounting frame	Dynacode/Flexicode	1
10	46.57.420	Guide shaft above, 250 mm mounting frame	Dynacode/Flexicode	4
	46.57.421	Guide shaft above, 340 mm mounting frame	Dynacode/Flexicode	4
	46.57.422	Guide shaft above, 430 mm mounting frame	Dynacode/Flexicode	4
	46.57.424	Guide shaft above, 470 mm mounting frame	Dynacode/Flexicode	4
	46.57.426	Guide shaft above, 620 mm mounting frame	Dynacode/Flexicode	4
	46.57.428	Guide shaft above, 770 mm mounting frame	Dynacode/Flexicode	4
11	46.57.430	Shaft for bogie wheel 250 mm mounting frame	Dynacode/Flexicode	2
	46.57.431	Shaft for bogie wheel 340 mm mounting frame	Dynacode/Flexicode	2
	46.57.432	Shaft for bogie wheel 430 mm mounting frame	Dynacode/Flexicode	2
	46.57.434	Shaft for bogie wheel 470 mm mounting frame	Dynacode/Flexicode	2
	46.57.436	Shaft for bogie wheel 620 mm mounting frame	Dynacode/Flexicode	2
	46.57.438	Shaft for bogie wheel 770 mm mounting frame	Dynacode/Flexicode	2

\*Recommended spare part

## 72.57.995A

### Mounting frame continous

#### Dynacode/Flexicode

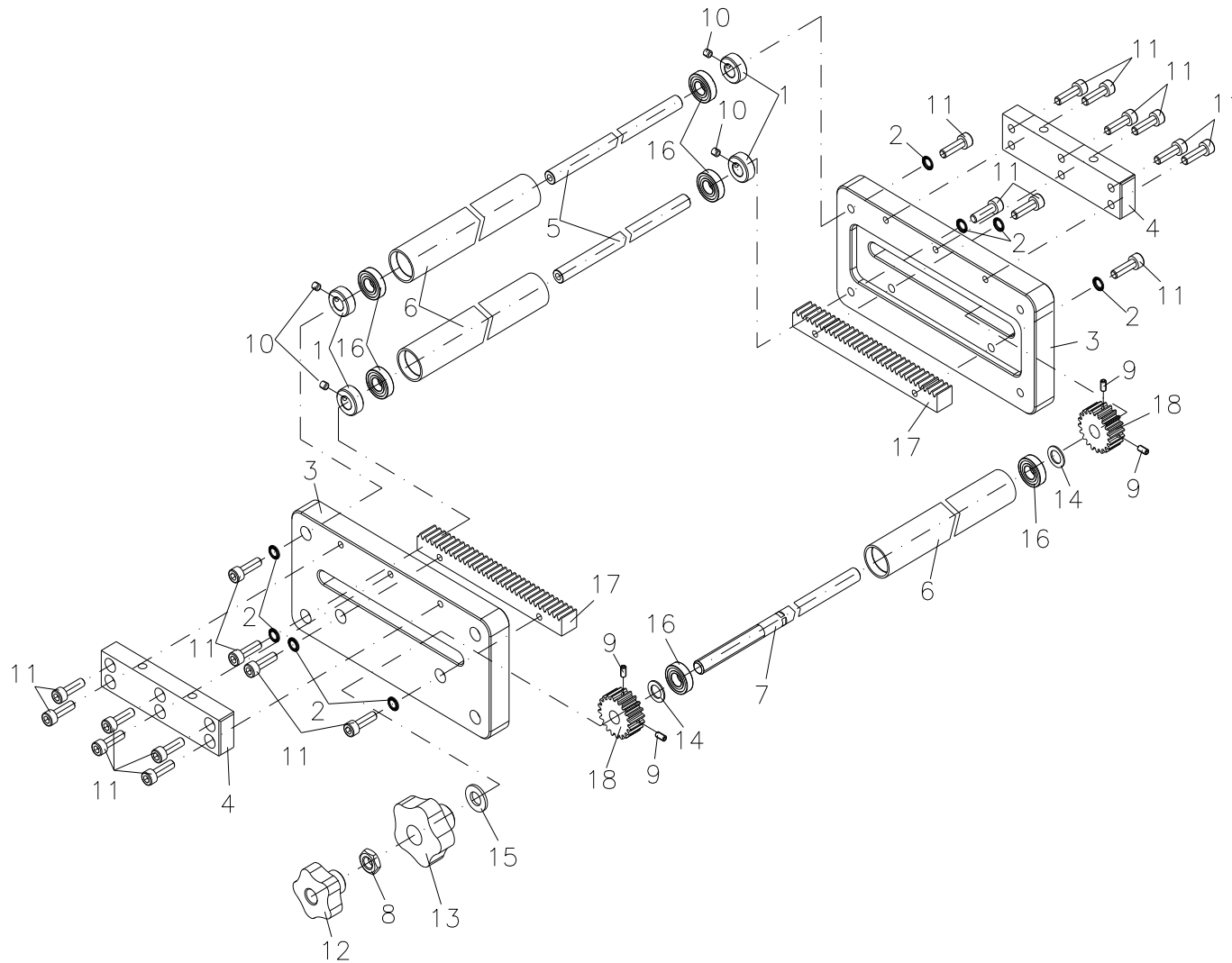
Pos	Ident-No.	Description1	Description2	Quantity
12	46.57.440	Bogie wheel 250 mm mounting frame/repeat	Dynacode/Flexicode	2
	46.57.441	Bogie wheel 340 mm mounting frame/repeat	Dynacode/Flexicode	2
	46.57.442	Bogie wheel 430 mm mounting frame/repeat	Dynacode/Flexicode	2
	46.57.444	Bogie wheel 470 mm mounting frame/repeat	Dynacode/Flexicode	2
	46.57.446	Bogie wheel 620 mm mounting frame/repeat	Dynacode/Flexicode	2
	46.57.448	Bogie wheel 770 mm mounting frame/repeat	Dynacode/Flexicode	2
13	47.05.001V	Hexagon nut M4 stainless		2
14	48.10.505V	Setscrew M5x5 stainless		4
15	48.16.016	Socket cap screw M4x25		2
16	48.16.408V	Socket cap screw M4x8 stainless		2
17	48.16.440V	Socket cap screw M4x40 stainless		4
18	48.16.620V	Socket cap screw M6x20 stainless		24
19	48.16.625V	Socket cap screw M6x25 stainless		4
20	48.16.630V	Socket cap screw M6x30 stainless		4
21	48.17.030	Clamping lever		1
22	48.70.001	Handle		1
23	50.01.065V	Lock washer 4.3 stainless		6
24	50.01.066V	Lock washer 6.4 stainless		4
25*	57.01.025	Grooved ball bearing		2
26*	57.01.027	Grooved ball bearing		4
27	67.57.405	Intermediate plate 0.5 mm	Dynacode/Flexicode	1
28	67.57.410	Intermediate plate 1.0 mm	Dynacode/Flexicode	1
29	72.67.505	Connection part cpl for mounting frame	Dynacode/Flexicode	1
30	72.67.585	Bearing cpl for pressure roller	Dynacode/Flexicode	1
31	72.67.590	Clamping piece above for mounting frame	Dynacode/Flexicode	1

\*Recommended spare part

# 72.57.996A

Repeat setting

Dynacode/Flexicode



## 72.57.996A

Repeat setting

Dynacode/Flexicode

Pos	Ident-No.	Description1	Description2	Quantity
1	10.57.401	Adjusting ring for mounting frame	Dynacode/Flexicode	4
2	41.03.006V	Lock washer M6 stainless		8
3	45.57.420	Main plate	Dynacode/Flexicode	2
4	45.57.425	Connecting part	Dynacode/Flexicode	2
5	46.57.430	Shaft for bogie wheel 250 mm mounting frame	Dynacode/Flexicode	2
	46.57.431	Shaft for bogie wheel 340 mm mounting frame	Dynacode/Flexicode	2
	46.57.432	Shaft for bogie wheel 430 mm mounting frame	Dynacode/Flexicode	2
	46.57.434	Shaft for bogie wheel 470 mm mounting frame	Dynacode/Flexicode	2
	46.57.436	Shaft for bogie wheel 620 mm mounting frame	Dynacode/Flexicode	2
	46.57.438	Shaft for bogie wheel 770 mm mounting frame	Dynacode/Flexicode	2
6	46.57.440	Bogie wheel 250 mm mounting frame/repeat	Dynacode/Flexicode	3
	46.57.441	Bogie wheel 340 mm mounting frame/repeat	Dynacode/Flexicode	3
	46.57.442	Bogie wheel 430 mm mounting frame/repeat	Dynacode/Flexicode	3
	46.57.444	Bogie wheel 470 mm mounting frame/repeat	Dynacode/Flexicode	3
	46.57.446	Bogie wheel 620 mm mounting frame/repeat	Dynacode/Flexicode	3
	46.57.448	Bogie wheel 770 mm mounting frame/repeat	Dynacode/Flexicode	3
7	46.57.450	Guide shaft repeat setting 250 mm	Dynacode/Flexicode	1
	46.57.451	Guide shaft repeat setting 340 mm	Dynacode/Flexicode	1
	46.57.452	Guide shaft repeat setting 430 mm	Dynacode/Flexicode	1
	46.57.454	Guide shaft repeat setting 470 mm	Dynacode/Flexicode	1
	46.57.456	Guide shaft repeat setting 620 mm	Dynacode/Flexicode	1
	46.57.458	Guide shaft repeat setting 770 mm	Dynacode/Flexicode	1
8	47.09.001V	Hexagon nut M10 stainless		1
9	48.10.408V	Setscrew M4x8 stainless		4
10	48.10.505V	Setscrew M5x5 stainless		4
11	48.16.620V	Socket cap screw M6x20 stainless		20

\*Recommended spare part

## 72.57.996A

Repeat setting

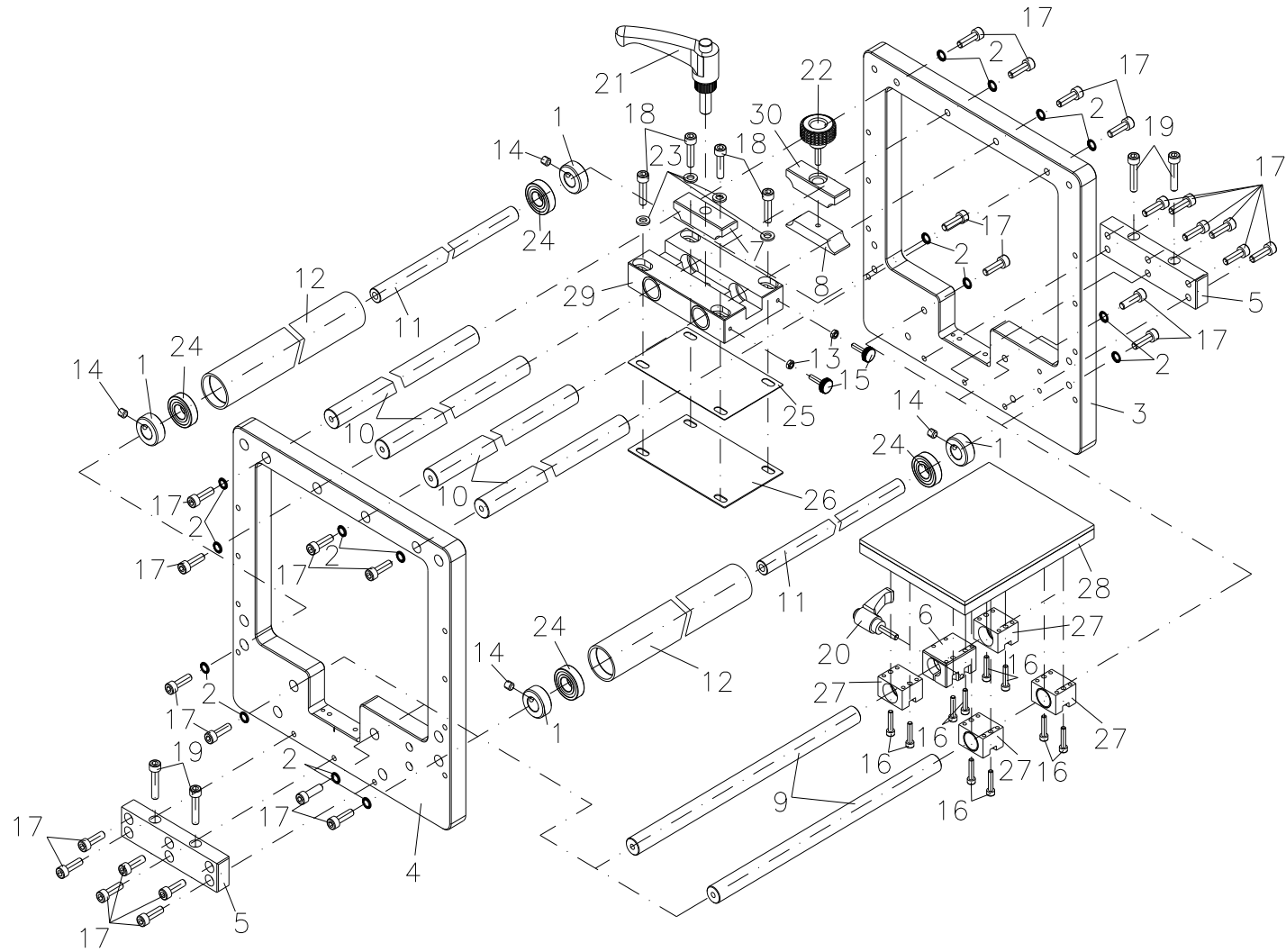
Dynacode/Flexicode

Pos	Ident-No.	Description1	Description2	Quantity
12	48.57.020	STAR KNOB		1
13	48.57.025	STAR KNOB		1
14	50.01.011	Washer 10x16x1.0		2
15	50.01.080V	Pan screw 10.5 stainless		1
16*	57.01.027	Grooved ball bearing		6
17	59.57.401	Cogged bar	Dynacode/Flexicode	2
18	59.67.605	Gear wheel for repeat setting		2

\*Recommended spare part

# 72.57.998A

Mounting frame intermittent  
Dynacode/Flexicode



## 72.57.998A

### Mounting frame intermittent

#### Dynacode/Flexicode

Pos	Ident-No.	Description1	Description2	Quantity
1	10.57.401	Adjusting ring for mounting frame	Dynacode/Flexicode	4
2	41.03.006V	Lock washer M6 stainless		16
3	45.57.410	Main plate, right, for mounting frame	Dynacode/Flexicode	1
4	45.57.415	Main plate, left, for mounting frame	Dynacode/Flexicode	1
5	45.57.425	Connecting part	Dynacode/Flexicode	2
6	45.67.301	Clamping piece for counter-pressure plate	DPM III/DPM IV/Dynacode	1
7	45.67.580	Clamping piece above, for mounting frame	Dynacode/Flexicode	1
8	45.67.590	Clamping piece below, for mounting frame	Dynacode/Flexicode	1
9	46.57.410	Guide shaft, passage width 250 mm, Dynacode	for mounting frame with counter-pressure plate	2
	46.57.411	Guide shaft, passage width 340 mm, Dynacode	for mounting frame with counter-pressure plate	2
	46.57.412	Guide shaft, passage width 430 mm, Dynacode	for mounting frame with counter-pressure plate	2
	46.57.414	Guide shaft, passage width 470 mm, Dynacode	for mounting frame with counter-pressure plate	2
	46.57.416	Guide shaft, passage width 620 mm, Dynacode	for mounting frame with counter-pressure plate	2
	46.57.418	Guide shaft, passage width 770 mm, Dynacode	for mounting frame with counter-pressure plate	2
10	46.57.420	Guide shaft above, 250 mm mounting frame	Dynacode/Flexicode	4
	46.57.421	Guide shaft above, 340 mm mounting frame	Dynacode/Flexicode	4
	46.57.422	Guide shaft above, 430 mm mounting frame	Dynacode/Flexicode	4
	46.57.424	Guide shaft above, 470 mm mounting frame	Dynacode/Flexicode	4
	46.57.426	Guide shaft above, 620 mm mounting frame	Dynacode/Flexicode	4
	46.57.428	Guide shaft above, 770 mm mounting frame	Dynacode/Flexicode	4
11	46.57.430	Shaft for bogie wheel 250 mm mounting frame	Dynacode/Flexicode	2
	46.57.431	Shaft for bogie wheel 340 mm mounting frame	Dynacode/Flexicode	2
	46.57.432	Shaft for bogie wheel 430 mm mounting frame	Dynacode/Flexicode	2
	46.57.434	Shaft for bogie wheel 470 mm mounting frame	Dynacode/Flexicode	2
	46.57.436	Shaft for bogie wheel 620 mm mounting frame	Dynacode/Flexicode	2
	46.57.438	Shaft for bogie wheel 770 mm mounting frame	Dynacode/Flexicode	2

\*Recommended spare part

## 72.57.998A

### Mounting frame intermittent

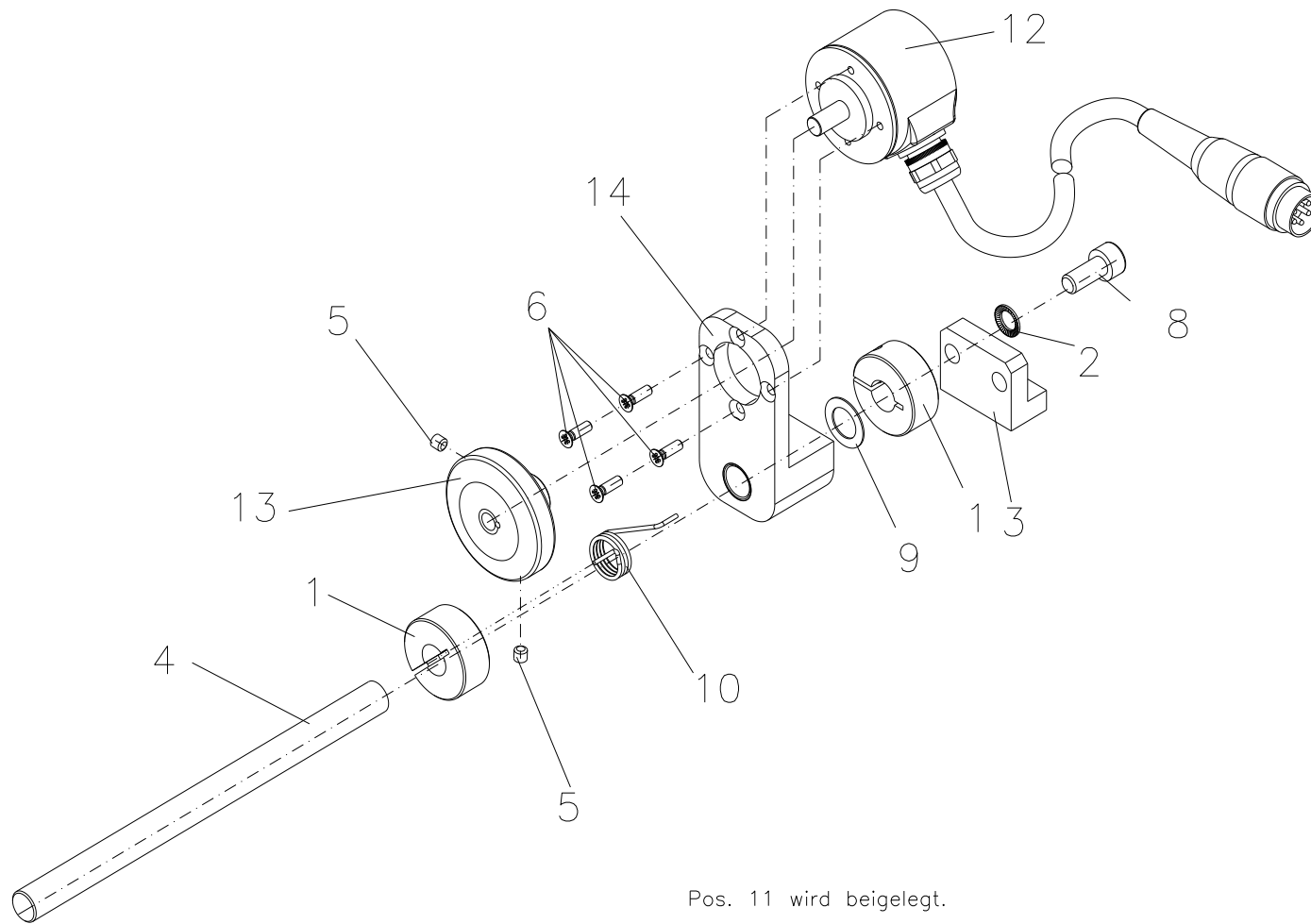
#### Dynacode/Flexicode

Pos	Ident-No.	Description1	Description2	Quantity
12	46.57.440	Bogie wheel 250 mm mounting frame/repeat	Dynacode/Flexicode	2
	46.57.441	Bogie wheel 340 mm mounting frame/repeat	Dynacode/Flexicode	2
	46.57.442	Bogie wheel 430 mm mounting frame/repeat	Dynacode/Flexicode	2
	46.57.444	Bogie wheel 470 mm mounting frame/repeat	Dynacode/Flexicode	2
	46.57.446	Bogie wheel 620 mm mounting frame/repeat	Dynacode/Flexicode	2
	46.57.448	Bogie wheel 770 mm mounting frame/repeat	Dynacode/Flexicode	2
13	47.05.001V	Hexagon nut M4 stainless		2
14	48.10.505V	Setscrew M5x5 stainless		4
15	48.16.016	Socket cap screw M4x25		2
16	48.16.420V	Socket cap screw M4x20 stainless		10
17	48.16.620V	Socket cap screw M6x20 stainless		28
18	48.16.625V	Socket cap screw M6x25 stainless		4
19	48.16.630V	Socket cap screw M6x30 stainless		4
20	48.17.020	Clamping lever		1
21	48.17.030	Clamping lever		1
22	48.70.001	Handle		1
23	50.01.066V	Lock washer 6.4 stainless		4
24*	57.01.027	Grooved ball bearing		4
25	67.57.405	Intermediate plate 0.5 mm	Dynacode/Flexicode	1
26	67.57.410	Intermediate plate 1.0 mm	Dynacode/Flexicode	1
27	72.67.100	Bearing block cpl for counter-pressure plate	DPM III/DPM IV/Dynacode	4
28	72.67.305	Counter-pressure plate cpl 107x140 mm	DPM/Dynacode	1
29	72.67.505	Connection part cpl for mounting frame	Dynacode/Flexicode	1
30	72.67.590	Clamping piece above for mounting frame	Dynacode/Flexicode	1

\*Recommended spare part

# 90.67.704

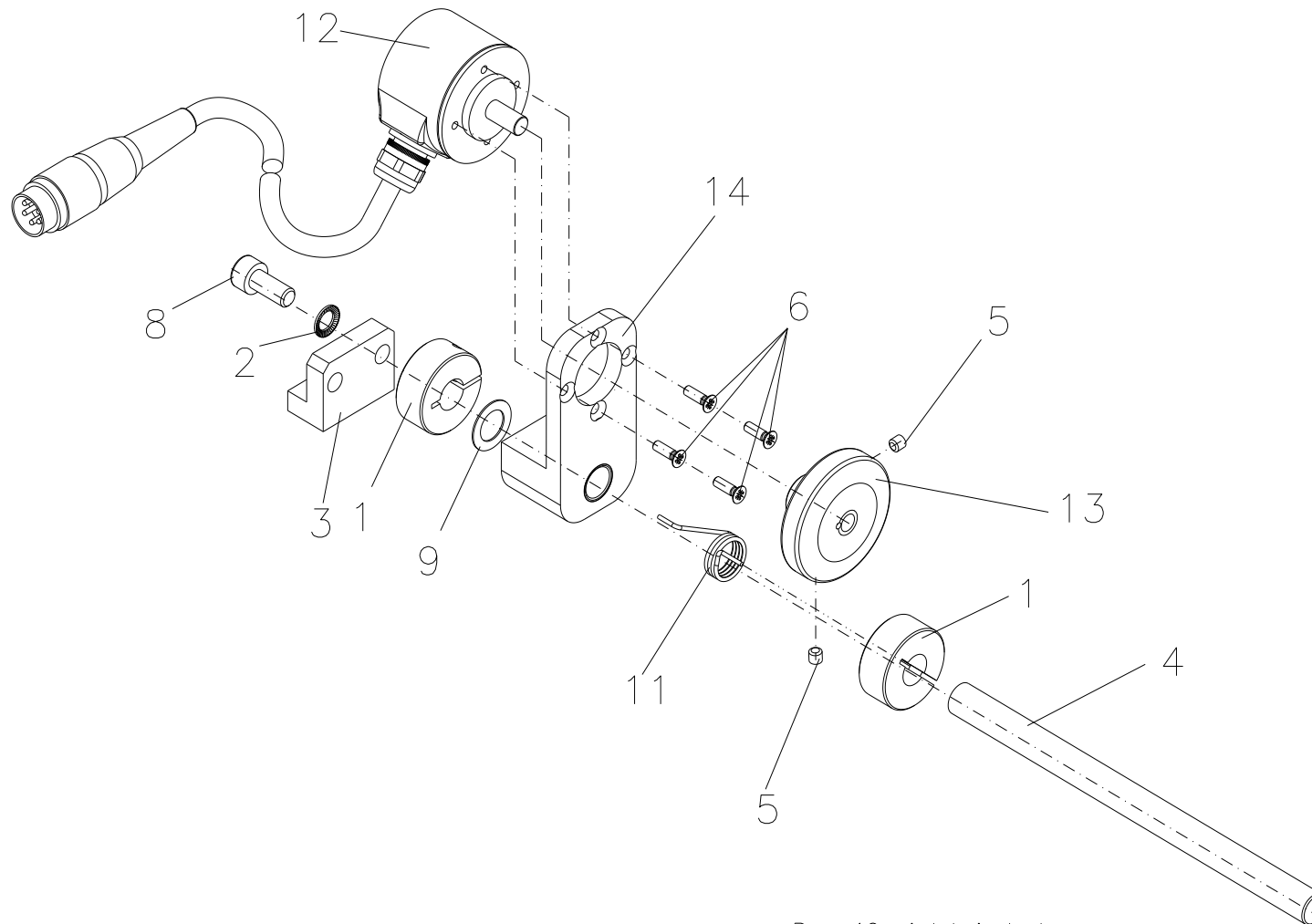
Encoder with friction wheel cpl 4.5 m  
DPM III c/Dynacode/Flexicode, option



rechte Ausführung

# 90.67.704

Encoder with friction wheel cpl 4.5 m  
DPM III c/Dynacode/Flexicode, option



linke Ausführung

Pos. 10 wird beigelegt.

## 90.67.704

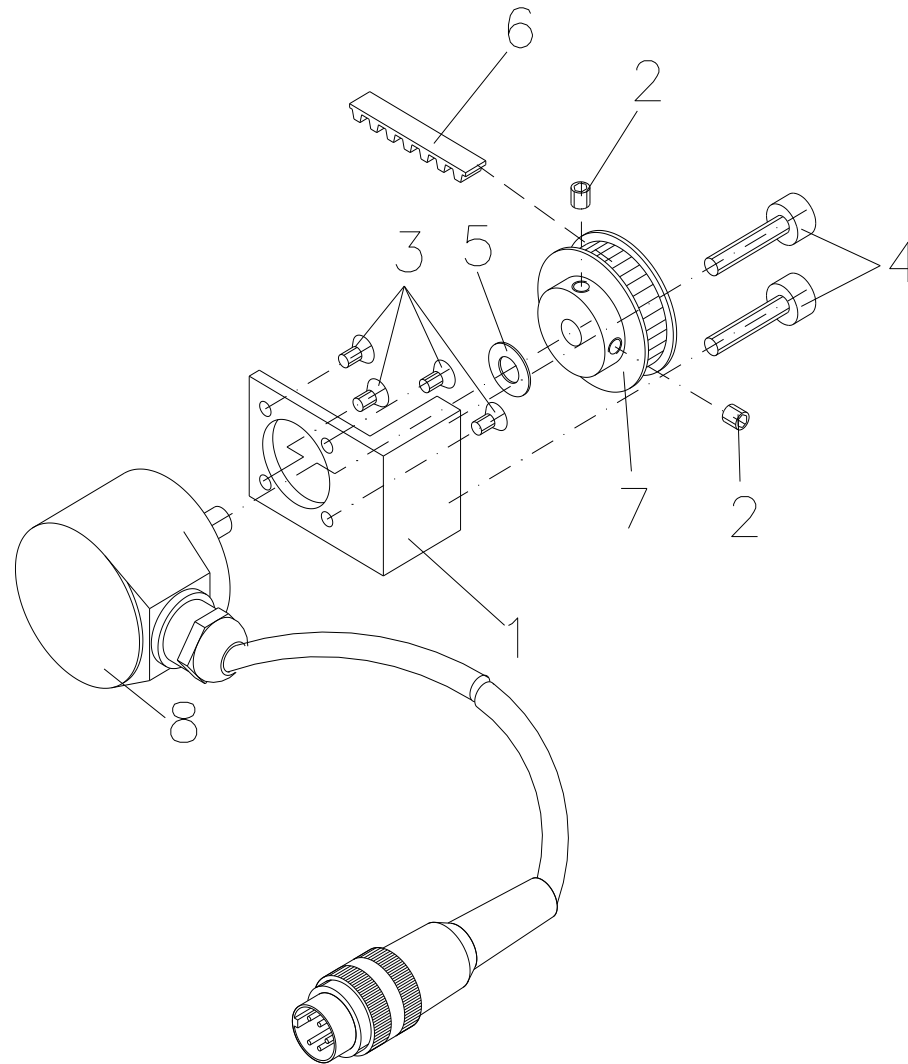
Encoder with friction wheel cpl 4.5 m  
DPM III c/Dynacode/Flexicode, option

Pos	Ident-No.	Description1	Description2	Quantity
1	37.67.510	Adjusting ring		2
2	41.03.006V	Lock washer M6 stainless		1
3	45.67.558	Holder for encoder		1
4	46.67.550	Holding shaft for encoder		1
5	48.11.404V	Setscrew M4x4 stainless		2
6	48.15.310V	Countersunk screw M3x10 stainless		4
7	48.16.420V	Socket cap screw M4x20 stainless		2
8	48.16.614V	Socket cap screw M6x14 stainless		1
9	50.01.010	Washer 10x16x0.5		1
10	52.67.505	Spring for encoder		1
11	52.67.515	Spring for encoder		1
12	71.67.041	Encoder incremental cpl 4.5 m	c-type	1
13	72.67.550	Friction gear cpl		1
14	72.67.580	Bearing cpl for encoder, with friction gear		1

\*Recommended spare part

# 90.67.705

Encoder for CV mounting frame 2.5 m  
DPM III c/Dynacode/Flexicode, option



## 90.67.705

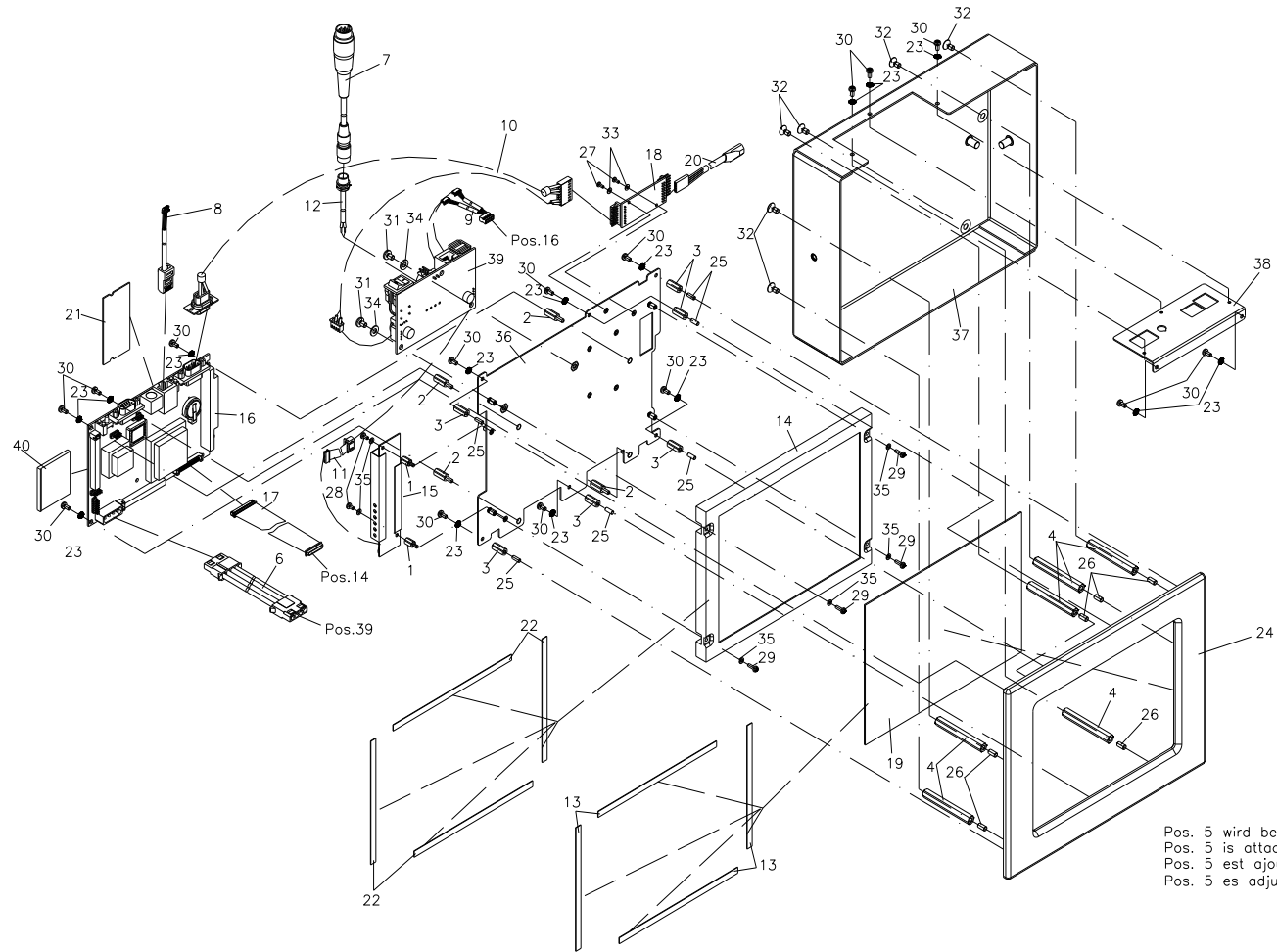
Encoder for CV mounting frame 2.5 m

DPM III c/Dynacode/Flexicode, option

Pos	Ident-No.	Description1	Description2	Quantity
1	45.67.570	Bearing for encoder	Dynacode/Flexicode	1
2	48.11.404V	Setscrew M4x4 stainless		2
3	48.15.003V	Countersunk screw M3x6 stainless		4
4	48.16.004V	Socket cap screw M4x25		2
5	50.50.605	Washer 6x12x0.5		1
6*	59.04.092	Toothed belt		1
7	59.67.040	Toothed belt wheel		1
8	71.67.040	Encoder incremental cpl 2.5 m	c-type	1

\*Recommended spare part

**90.57.990**  
**Touch panel 8.4"**  
**Option**



Pos. 5 wird beigelegt.  
 Pos. 5 is attached.  
 Pos. 5 est ajouté.  
 Pos. 5 es adjuntado.

## 90.57.990

### Touch panel 8.4"

#### Option

Pos	Ident-No.	Description1	Description2	Quantity
1	12.40.208	DISTANCE BOLT		2
2	12.40.312	Distance bolt M3x12.5		4
3	12.40.313	Distance bolt M3x13		6
4	12.57.005	Distance bolt M4x55	Dynacode Touch	6
5	28.57.0181	CABLE	DYNACODE	1
6	28.57.491	Connecting cable, PC power		1
7	28.57.492A	Connecting cable, touchpanel/DC power	Dynacode	1
8	28.57.493	Conncteing cable RJ45		1
9	28.57.494A	Connecting cable USB		1
10	28.57.495	Connecting cable CPU/circuit board	Dynacode	1
11	28.57.496B	Connecting cable voltage/touch inverter	Dynacode	1
12	28.57.497A	Connecting cable 48 V	Back panel/voltage distributor plate	1
13	37.57.400	Adhesive tape 6 mm		0,02
14	37.57.490B	TDT-COLOR DISPLAY 8,4" NEC	640x480, 256 COLORS	1
15	37.57.491B	BL-Inverter 12 V 84PW031		1
16	37.57.492A	ADVANTEC BOARD AMD LOW POWER		1
17	37.57.494A	DATA CABLE (BOARD / DISPLAY)		1
18	37.57.495	Touch controller RS-232 12 m		1
19	37.57.496	Touch screen 8.4"		1
20	37.57.497	ADAPTING CABLE TOUCH CONTROLLER		1
21	37.57.498A	SDRAM 128MB DDR333/400, SODIMM socket		1
22	37.88.001	Rubber-sponge		0,02
23	41.03.003V	Lock washer M3 stainless		15
24	45.57.495	Front panel touch-screen	Dynacode	1
25	48.10.308V	Setscrew M3x8 stainless		6
26	48.10.408V	Setscrew M4x8 stainless		6

\*Recommended spare part

## 90.57.990

Touch panel 8.4"

Option

Pos	Ident-No.	Description1	Description2	Quantity
27	48.14.105V	Pan screw M2x5 stainless		2
28	48.14.205V	Pan screw M2.5x5 stainless		2
29	48.14.208V	Pan screw M2.5x8 stainless		4
30	48.14.306V	Pan screw M3x6 stainless		15
31	48.14.406V	Pan screw M4x6 stainless		2
32	48.15.408V	Pan screw M4x8 stainless		6
33	50.01.009V	Lock washer M2 stainless		2
34	50.01.065V	Lock washer 4.3 stainless		2
35	50.01.069V	Lock washer M2.7 stainless		6
36	67.57.490	INTERMEDIATE BOTTOM TOUCH SCREEN		1
37	67.57.495	Touch screen cover		1
38	67.57.497	GUSSET TOUCH SCREEN		1
39	70.57.025	Circuit board voltage distributor 48 V-5/12 V	Dynacode touch screen terminal	1
40	82.57.490	Compactflash Touch Screen programmed "CV"		1

\*Recommended spare part

Modifications and errors excepted

Flexicode: 11.2025

45 / 45